



FINE ART SOCIETY
NEW ZEALAND

WAIKATO ART AUCTION 2010

Monday 22nd November at 6.30pm



FINE ART SOCIETY
NEW ZEALAND

WAIKATO ART AUCTION

NOVEMBER 2010

Monday 22nd November 2010 at 6.30pm



Proudly supported by The Rotary Club of Waikato Sunrise
Waikato Art Auction 2010 will assist in raising funds for youth related programmes

AESTHETE GALLERY

a gallery member of



AESTHETE GALLERY



HAMILTON

WE VALUE, BUY AND SELL FINE ART

Historical & Contemporary Fine Art

Early New Zealand works; colonial landscapes;
early Maori portraits and examples of the best art produced
in the late 19th and the 20th centuries.

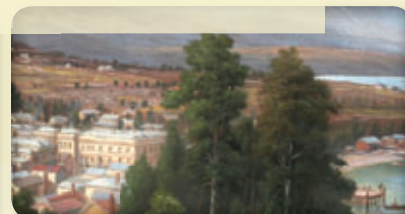
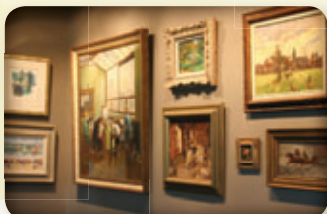
Contemporary works by the country's leading artists,
representing a wide range of subjects, styles and mediums.

We can arrange restoration, framing, valuation
and appraisals of any painting.

Aesthete Gallery - at the heart of fine art

HAMILTON

Corner of Victoria and Rostrevor Streets



Tel: 07 839 0730 www.aesthete.co.nz



FINE ART SOCIETY
NEW ZEALAND

WAIKATO ART AUCTION NOVEMBER 2010

Welcome to Waikato Art Auction November 2010, our major fine art auction of the year. We are pleased to present a wide range of interesting new offerings. Included in this sale are a number of particularly rare and important paintings.

Much of the art offered for sale in this catalogue has come from various estates and private collections nationwide. We believe the estimates to be very realistic and a number of lots are being sold without reserve. We are confident you will find something worthy of your interest. We look forward to welcoming you to the viewing and seeing you at the auction.

If you require more information on anything in the catalogue please don't hesitate to contact us.

Fine Art Society New Zealand provides a comprehensive fine art consultation service. Should you require advice on values, marketing, condition, restoration or custom frame making we offer obligation free service.

Please direct any enquiries to either myself or the staff at Aesthete Gallery Hamilton.

Grant Bezett
Director Fine Art Society New Zealand

grant@fineartsociety.net
www.fineartsociety.net

VIEWING HELD AT

Aesthete Gallery Hamilton

cnr Victoria & Rostrevor Sts
Hamilton

**Saturday 13th November to
Sunday 21st November
Daily: 10am – 4pm**

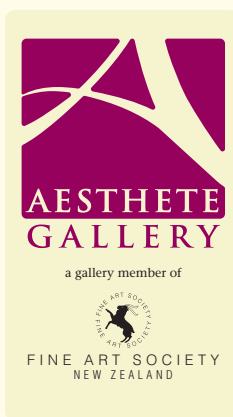
**Viewing on day of sale
Monday 22nd: 9am – 1pm**

Ph: 07 839 0730

Fax: 07 839 0731

www.aesthete.co.nz

info@aesthete.co.nz



AUCTION HELD AT

**Monday 22nd November 2010
commencing 6.30pm**

RSA Rooms

Rostrevor Street
Hamilton

Ph: 0800 377 483

Brian King

Licensed Auctioneer





1

Violet Watson

1906-1992

Crysanthemum, Oil on Board

Signed, 65 x 59cm, \$400 - 600



2

Elaine Gribble

NZ 20thC

The Magical Rooster, Watercolour

Signed and dated, 22 x 22cm, \$400 - 600



3

Elaine Gribble

NZ 20thC

Irises

Watercolour

Signed

74 x 54cm

\$600 - 900

8

John Speedy

NZ 20thC

*Afternoon light**on the Anchorage*
Oil on Canvas

Signed

35 x 60cm

\$300 - 500



4

George LylesBritish 20thC, *Venetian**Canal*, Watercolour, Signed

18 x 13cm, \$150 - 200



5

George LylesBritish 20thC, *Boats on the Hard*

Watercolour, Signed, 17 x 27cm

\$180 - 250



6

Graham K BraddockNZ b1942, *Towards Taupiri*

Oil on Board, Signed

48 x 67cm, \$300 - 400

7

G.E. Woolley1877-1952, *Whangarei 1929*

Oil on Board, Signed and dated

16 x 36cm, \$200 - 300





9
Joan Fear
 NZ 20thC
Chooks
 Mixed Medium
 Signed
 37 x 27cm
 \$300 - 500



13
Kathy Simpler
 NZ 20thC
Peony Roses
 Oil on Board
 Signed
 35 x 27cm
 \$500 - 700



10
A. Thorburn
 British 20thC
Peacock
 Oil on Canvas on
 Board
 Signed
 19 x 24cm
 \$300 - 500



11
Artist Unknown
 British 19thC
*Heath, Sea
 and Church*
 Watercolour
 19 x 30cm
 \$100 - 200



14
**Bernhard
 Petersen**
 British 20thC
*On the
 Promenade*
 Oil on Board
 Signed
 30 x 23cm
 \$400 - 600



12
Josephine Davis
 NZ b1959
Hydrangeas
 Watercolour, Signed
 36 x 46cm
 \$300 - 500



15
**Josephine
 Davis**
 NZ b1959
Ladies at the Ball
 Gouache, Signed
 and dated 1988,
 39x 31cm
 \$500 - 700

**16****Roy Pettitt**British 20thC, *Kids at the Beach*

Oil on Canvas, Signed

60 x 60cm, \$1200 - 1800

**17****Josephine Davis**NZ b1959, *Punting on the Avon*

Oil on Canvas, Signed

46 x 61cm, \$900 - 1200

**18****J. Milne**British 19thC
*Riverside town**and bridge*

Watercolour

Signed

24 x 34cm

\$200 - 300

**19****Artist Unknown**

British 19thC

The Old Mill

Watercolour

22 x 33cm

\$100 - 200

20**J. Priestley**

British 19thC

*Village of Grange**Cumberland*

Watercolour

Signed and titled

25 x 36m

\$350 - 600

**21****Smith**

NZ 19thC

Wanganui River

Pastel

Signed

30 x 47cm

\$200 - 300

**22****Artist Unknown**

British 19thC

*Eastbourne**Sussex Sept 1850*

Watercolour

Dated 1850

21 x 32cm, \$100 - 200

**23****Artist Unknown**

British 19thC

Boys in a Boat

Oil on Card

24 x 19cm

\$200 - 300

**24****Walter Eastwood**

British b1857

*Pair of scenes**Lake Buttermere*

Watercolour, Signed

35 x 25cm, \$600 - 900





25
Beverly Ray
 NZ 20thC
Woman Weaving
 Watercolour
 Signed
 51 x 39cm
 \$400 - 500



29
William Alan Bollard
 1869-1941, *The Remarkables*, Oil on Board, Signed
 31 x 52cm, \$500 - 800



26
W. Petherick
 NZ 19thC
Pelorous Sound
 Oil on Board
 Signed
 60 x 89cm
 \$800 - 1000

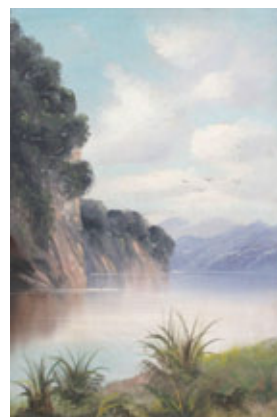


30
O.E. Cockburn
 NZ 20thC, *King Koroki preceded by Dame TeAta* 1965
 Oil on Canvas, Signed, 64 x 89cm, \$600 - 800



27
W. Petherick
 NZ 19thC, *Milford Sound '05*
 Oil on Board, Signed and dated
 60 x 89cm, \$800 - 1000

31
NZ School
 NZ 19thC
Pair of River Scenes
 Oil on Board
 44 x 29cm each
 \$200 - 300



28
Cameron
 NZ 19thC
Patea River '90
 Oil on Canvas
 Signed, Titled
 and dated
 50 x 91cm
 \$500 - 800



32
Artist Unknown
 NZ 19thC, *Coast and House*
 Watercolour
 17 x 32cm, \$100 - 200

**33****Philippa Blair**

NZ b1945

Escape 2004

Oil on Canvas

Signed and dated

51 x 51cm

\$3500 - 5000

37**Eion Stevens**

NZ b1952

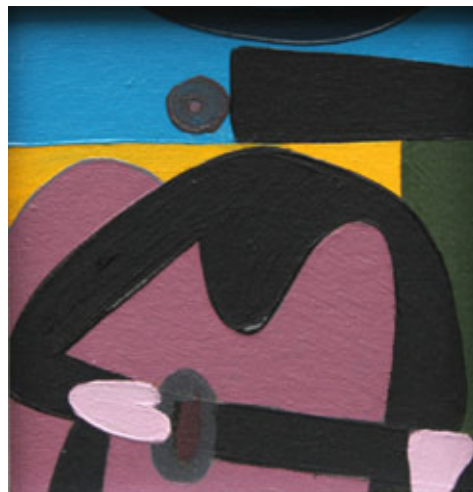
Player 2006

Oil on Board

Signed and dated

32 x 30cm

\$900 - 1200

**34****Philippa Blair**

NZ b1945

Blush No2 2004

Oil on Canvas

Signed and dated

60 x 60cm

\$3500 - 4500

38**Keith Patterson**

1925-1993

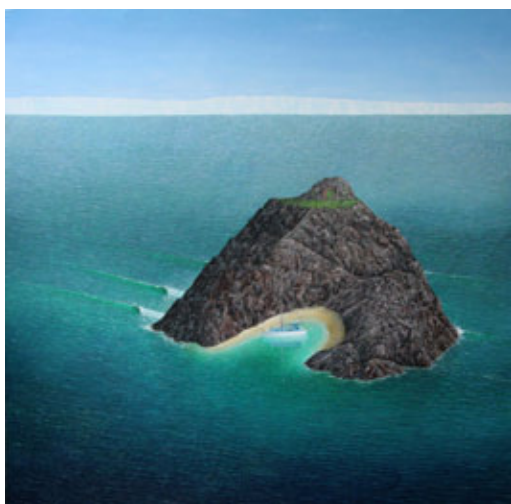
Silla Chair 1990

Mixed Media

Signed and dated

65 x 50cm

\$1500 - 2000

**35****Justin Summerton**

NZ b1968

Hobbit Island 2009

Oil on Canvas

Signed and dated

61 x 61cm

\$2000 - 3000

39**Keith Patterson**

1925-1993

Silla Chair B&W 1998

Watercolour

Signed and dated

65 x 53cm

\$1500 - 2000

**40****Keith Patterson**1925-1993, *Abstract Aboriginal Art*

Gouache and Crayon, Signed and Inscribed

42 x 68cm, \$900 - 1200

**36****Robyn Kahukiwa**

NZ b1940

Huka Series Tahi

Oil and Aklyd Oil on

Canvas

Signed and dated

46 x 61cm

\$3000 - 4500



41

Allen MaddoxNZ 1948-2000, *Untitled 1976*

Oil on Canvas, 57 x 61cm, \$4000 - 6000



45

Michael Smither

NZ b1939

The Mast at Rest

Oil on Board

Signed and dated

16 x 28cm

\$3500 - 5000

42

Allen Maddox

NZ 1948-2000

Even to the More

Watercolour

Initialed and dated

17/4/90

41 x 29cm

\$1400 - 1800



44

Michael SmitherNZ b1939, *Hahei Reserve*

Oil on Board, Signed and dated

17 x 28cm, \$3500 - 5000



43

Grant Corbishley

NZ b1951

N.1286-2.5-D.08

Colour Pencil on Wood

Signed and dated

39 x 25cm

\$1000 - 1400

46

Raymond Jennings

NZ 20thC

Dahlia Still Life

Oil on Canvas

Signed and dated

129 x 90cm

\$1200 - 1800



47

Russell Kirkham

NZ 20thC

82

Oil on Board, Signed and dated

60 x 48cm, \$600 - 900



48

Eion Stevens

NZ b1952

Rabbit Concept 2010

Oil on shaped Board

Signed and dated

36 x 31m

\$1000 - 1400

49

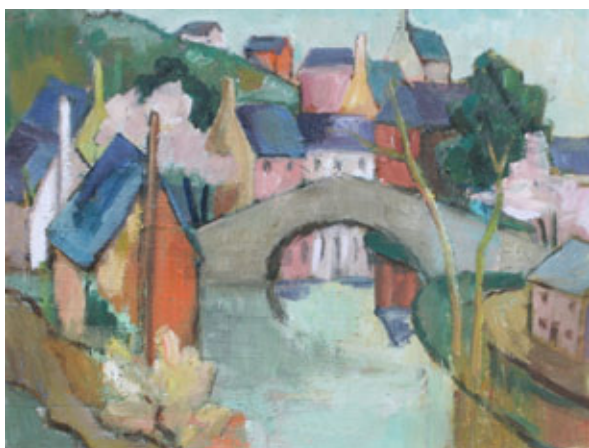
Gwen Knight

1888-1974

European Townscape

Oil on Board, Signed

29 x 38cm, \$1200 - 1800



50

Garth Tapper1927-1999, *Two Men drinking in a Bar Oct '77*

Oil on Board, Signed and dated, 31 x 48cm, \$5000 - 7000



51

Garth Tapper1927-1999, *On the Beach Oct '77*

Oil on Canvasboard, Signed and

dated, 33 x 55cm, \$4000 - 6000

52

Arthur Dagley

1919-1998

Port Theme

Wood and Resin

Signed

44 x 27cm

\$1000 - 1400



53

Arthur Dagley1919-1998, *Composition C8*

Acrylic on board, Signed

32 x 48cm, \$1200 - 1800





54

John Weeks

1888-1965

Boats at Viaduct Harbour

Watercolour, Signed and dated

25 x 34cm, \$900 - 1200



55

Peggy Spicer

1908-1974

Chamberlains Bay, Ponui Island

Watercolour, Signed, 27 x 37cm, \$1800 - 2500

56

Rata Lovell Smith

1894-1969

Bush Track, Waimakariri River

Oil on Board, Signed, 35 x 44cm, \$1800 - 2500



57

Cecil Kelly

1878-1954

Road to Lyttelton, Oil on Canvas

Signed, 70 x 90cm, \$5000 - 8000



58

Ida Carey

1891-1982

Nanny and her Mokopunas

Oil on Board, Signed, 58 x 70cm, \$800 - 1200

59

Robert Proctor

1879-1931

Marketplace, Oil on Board

Original gallery label verso, 26 x 38cm, \$1800 - 2500





60
William George Baker

1864-1929
*Hall's Arm,
Milford Sound*
Oil on Canvas
Signed and titled
60 x 90cm
\$5000 - 8000



61
Laurence W Wilson

1850/52-1912
Westport Plain
Watercolour
Signed, Titled and
dated 1898
19 x 33cm
\$3000 - 4500



62
William George Baker

1864-1929
Otira Gorge, Oil on Canvas, Signed and titled
61 x 91cm, \$5000 - 8000



64
Vera Cummings

1891-1949, *Maori Chief in Feather Cloak*
Oil on Canvas, Signed, 20 x 15cm
\$2800 - 4500



65
Charles Blomfield

1848-1926
Diamond Lake from a spur of Mt Earnslaw
Oil on Canvas, Signed, 43 x 59cm, \$12000 - 16000



63
Laurence W Wilson

1850/52-1912
*Livingston Mountains,
Lake Mavora*
Watercolour
Signed and titled
25 x 50cm
\$7000 - 10000

Provenance:
ex Sir Ron Brierley collection



66

John Gully

1819-1888, *Head of Lake Wakatipu* 1879
Looking towards Glenorchy and Mt Earnslaw
 Watercolour, Signed and dated 1879
 61 x 129cm, \$80000 - 100000

Provenance:

John Gilchrist. By descent to William Gilchrist, Founder of Colonial Sugar Refineries, who married Clara Knox, daughter of Sir Edward Knox. Thence by descent to William Oswald Gilchrist's great grand-daughter.



67

E.W. Christmas

1861-1918
River Camp at Sunset
 Oil on Canvas
 Signed
 29 x 49cm
 \$400 - 600



69

J.C.Hoyte

1835-1913, *Lake Wakatipu*
 Watercolour, Signed, 12 x 44cm, \$2500 - 3500



68

E.W. Payton

1859-1944
The Old Mill, Sunnyside
 Oil on Canvas
 Signed
 51 x 36cm
 \$1500 - 2000



70

J.C.Hoyte

1835-1913, *In the Sounds*
 Watercolour, Signed, 17 x 41cm, \$2200 - 3000



71

J.C.Hoyte

1835-1913
Milford Sound
 Watercolour
 Signed
 25 x 43cm
 \$3500 - 5000



72
L.S. Harris
attributed

Canadian
1885-1970
River Scene
Oil on Board
23 x 29cm
\$20000 - 50000

Provenance:
From the estate of a Canadian woman who was born in Peterborough, Ontario in 1914. She emigrated to New Zealand where she lived until her death in 2008. The woman married in New Zealand and the painting was a wedding gift brought out from Canada by a wealthy relation. There is a framing label verso from Brantford Ontario dated 1941

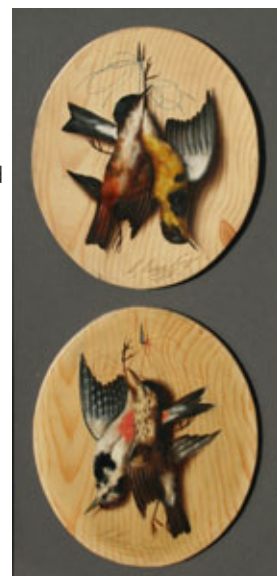


73
H.G. Giradot

French 19thC
Still Life 1898
Watercolour, Signed and dated
97 x 67cm, \$4500 - 6000

74
Michalangelo Meucci

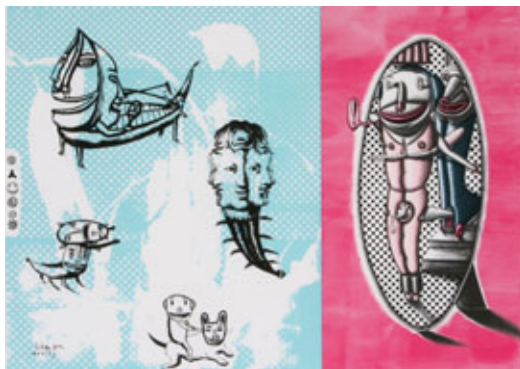
Italian 1840-1890
Hanging Songbirds
Pair Oval Oils on board
Signed and dated
each 29 x 23cm
\$2300 - 3000



75
Gustave Maincent

French 1850-1888
Near Fontainbleu
Oil on Canvas
Signed
37 x 54cm
\$5000 - 8000



**76****Jenny Dolezel**

NZ b1964

Like You Really

Lithograph 12/30

Signed and dated 2003

36 x 52cm, \$600 - 800

80**Dick Frizzell**

NZ b1943

Comic Roses

Screeprint 51/75

Signed and dated 2004

45 x 35cm, \$900 - 1200

**77****Shane Cotton**

NZ b1964

Paraiha

Screenprint 22/40

Signed and dated 2009

56 x 75cm

\$2000 - 2800

81**Max Gimblett**

NZ b1935

*Red skull on**Gold background*

Monoprint

Signed and dated 2008

50 x 35cm, \$1200 - 1800

**78****Shane Cotton**

NZ b1964

Broken Water

Screenprint 17/60

Signed and dated 2008

40 x 50cm

\$650 - 950

**79****Sara Hughes**

NZ 20thC

KZSPYGV

Screenprint 2/60

Signed and dated 2008

75 x 56cm

\$600 - 800

82**Robert Ellis**

NZ b1929

Aroha

Screenprint 2/60

Signed and dated 2008

75 x 56cm

\$600 - 800



**83****Paul Dibble**

NZ b1943

Fantail on a large circle

Cast Bronze 1/5

Signed

Height 57cm

\$4800 - 6000

**86****Awanui Hamon**NZ 20thC, *Otahu Royal Blue* Oct '02

Acrylic on Board, Signed and dated

57 x 78cm, \$300 - 600

**87****Justin****Summerton**

NZ b1968

*Aramoana Path**to Beach 2008*

Oil on Canvas

Signed and

dated

102 x 102cm

\$3000 - 3500

**84****E Mervyn Taylor**

1906-1964

Crocodile

Print

Signed

21 x 21cm

\$400 - 600

**85****Franki deVorms**

NZ 20thC

Female Torso

Charcoal

Signed and dated

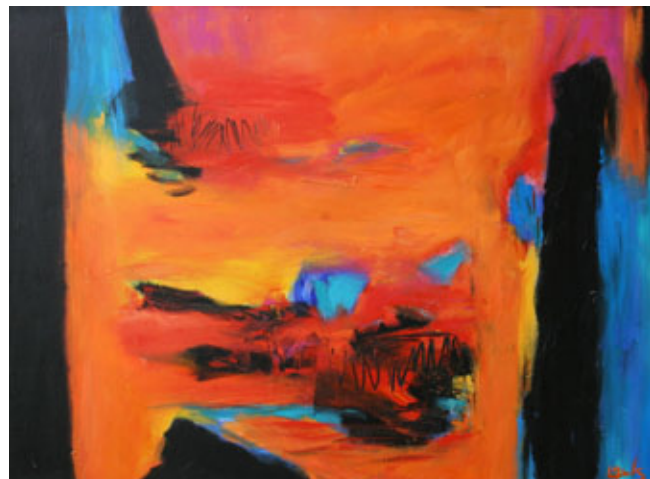
83 x 58cm

\$300 - 400

88**Judith Laws**Aust 20thC, *The Land Between*

Acrylic and Oilstick on Canvas

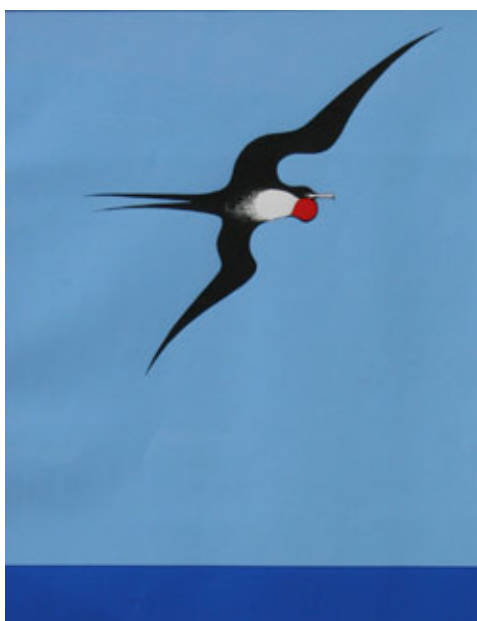
Signed, 76 x 101cm, \$5000 - 7000





89
Margaret Woolley
 NZ 20thC
Secrets
 Acrylic on Board
 Signed and dated
 50 x 40cm
 \$500 - 700

92
Unknown
 NZ 19thC
Pair of River Scenes
 Oval oils on board
 41 x 18cm
 \$200 - 300



90
Don Binney
 NZ b1940
Pacific Frigate Bird
 Barry Lett Multiple
 54 x 45cm
 \$2400 - 3000

93
G.M.Dundas
 British 19thC
Bridge and Burn 1932
 Watercolour
 Signed and dated
 22 x 28cm
 \$100 - 200



94
Peggy Spicer
 1908-1974
Old Schoolhouse Paeroa
 Watercolour
 Signed
 26 x 31cm
 \$400 - 600



91
Edith Emma Strutton (nee Munnings)
 1867-1939
In Bombay
 Watercolour
 Signed and titled
 30 x 20cm
 \$600 - 900

95
C.F.Goldie
 1870-1947
The Good Joke
 Lithgraph in period veneer wood frame
 30 x 24cm
 \$500 - 800



*Get on the grapevine – www.primovino.co.nz –
to join our weekly email keeping you in touch with
our Friday night tastings and special wine deals*

*Purveyor of
fine wines to
FINE ART SOCIETY
NEW ZEALAND*

SINCE 1996
PRIMOVINO

955 Victoria Street, Hamilton
Ph 07 839 3139 Email wine@primovino.co.nz

WWW.PRIMOVINO.CO.NZ

WAIKATO
INSURANCE
BROKERS
LIMITED

Are proud to be the insurance providers for
AESTHETE GALLERY HAMILTON and FINE ART SOCIETY NEW ZEALAND

PO BOX 1118 • 27 HARWOOD ST • HAMILTON 3240 • PH: 07 839 3627 • EMAIL: john@wibl.co.nz

For professional obligation-free advice on all your insurance requirements



**WORLDWISE
TRAVELLERS HEALTH
and
VACCINATION CENTRE**

Gate 1, Anglesea Clinic
cnr Anglesea and Thackeray Streets, Hamilton
Phone 07 839 7761
Email: hamilton@worldwise.co.nz
Web: www.worldwise.co.nz

Proud Supporters of Aesthete Gallery



ABSENTEE BIDDING FORM

Name:.....

Address:

Phone: Mobile:

Fax: Email:

Bidding Number
(Will be issued for our reference)

I agree to comply with the Conditions of Sale as printed in this catalogue.

Signed:.....

[illegible]

AUCTION HELD AT

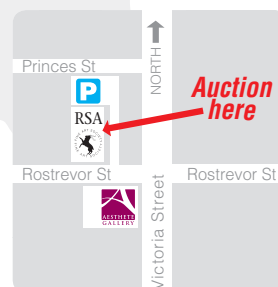


Ph 0800 377 483
PO Box 37 849
Parnell
Auckland

www.fineartsociety.net

Rostrevor Street
Hamilton
Ph: 0800 377 483

Brian King
Licensed
Auctioneer





FINE ART SOCIETY
NEW ZEALAND

CONDITIONS OF SALE

The highest bidder shall be the buyer. In the event of any dispute as to the bidding in respect of any lot, that lot be offered again at the discretion of the auctioneer whose decision shall be absolute and final.

The auctioneer has the right:

1. To refuse any bid
2. To advance the bidding at his absolute discretion
3. To place a reserve on any lot
4. To place a bid or bids on behalf of the seller
5. To withdraw any lot from sale
6. To require a successful bidder to pay forthwith the whole or any parts of the purchase price

The auctioneer acts as the agent of the seller and the auctioneer nor the seller shall be responsible for any defects or faults in any lot or for any errors in the description of any lot and no compensation shall be paid in respect of same.

From the time of the lot being sold, such lot will be the responsibility of the buyer.

BUYERS' GUIDE

BIDDER REGISTRATION

All intending bidders are required to register for a bidding number prior to the auction commencing.

ABSENTEE BIDS

Absentee bidding can be arranged – please ask a member of staff for an *Absentee Bidding Form* or see overleaf. The Auctioneers will do its utmost to execute absentee bids for customers, however it will not be responsible if circumstances arise which result in failure to do so.

COLLECTION OR DELIVERY OF PURCHASES

Successful bidders may collect their purchases after making payment at the conclusion of the auction. Purchasers are required to settle their accounts and collect their purchases within 24 hours after the sale. Packing and freight can be arranged at the buyer's expense.

BUYERS' PREMIUM

A buyers' premium of 12.5% (plus GST) applies to all lots.

ESTIMATES

Estimates are provided as a guide only. They are prepared well in advance of the sale and are subject to revision at any time.

PAYMENT FACILITIES

EFTPOS is available for transactions up to \$2,000 which is the bank's daily limit. For transactions over that amount it is possible to pay by cheque where credit card details are provided as security and at the sole discretion of management. Visa and Mastercard are accepted on the understanding that a 2% surcharge applies.

VIEWING HELD AT

Aesthete Gallery Hamilton

cnr Victoria &
Rostrevor Sts
Hamilton
Ph: 07 839 0730
Fax: 07 839 0731
www.aesthete.co.nz
info@aesthete.co.nz

STAGED BY



FINE ART SOCIETY
NEW ZEALAND

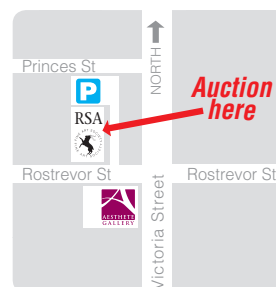
Ph 0800 377 483
PO Box 9285
Newmarket
Auckland
www.fineartsociety.net

AUCTION HELD AT

RSA Rooms

Rostrevor Street
Hamilton
Ph: 0800 377 483

Brian King
Licensed
Auctioneer



a gallery member of



FINE ART SOCIETY
NEW ZEALAND

WAIKATO ART AUCTION

NOVEMBER 2010



Lot 72

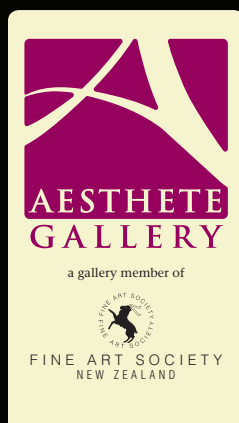


Proudly supported by The Rotary Club of Waikato Sunrise
Waikato Art Auction 2010 will assist in raising funds for youth related programmes

Viewing held at:

Staged by:

Auction held at:



Aesthete Gallery
Hamilton
cnr Victoria &
Rostrevor Sts
Hamilton
Ph: 07 839 0730
Fax: 07 839 0731
www.aesthete.co.nz
info@aesthete.co.nz



FINE ART SOCIETY
NEW ZEALAND

Ph 0800 377 483
PO Box 9285
Newmarket
Auckland
www.fineartsociety.net

RSA Rooms
Rostrevor Street
Hamilton
Ph: 0800 377 483

Brian King
Licensed
Auctioneer

