



FINE ART SOCIETY
NEW ZEALAND

WAIKATO ART AUCTION 2012



Monday 24th September 2012 at 6.30pm

Lot 54 detail



FINE ART SOCIETY
NEW ZEALAND

WAIKATO ART AUCTION

SEPTEMBER 2012

Monday 24th September 2012 at 6.30pm



Proudly supported by The Rotary Club of Waikato Sunrise
Waikato Art Auction 2012 will assist in raising funds for youth related programmes

a gallery member of



AESTHETE GALLERY



HAMILTON

WAIKATO'S LEADING FINE ART GALLERY

Historical & Contemporary Fine Art

Early New Zealand works; colonial landscapes; early Maori portraits and examples of the best art produced in the late 19th and the 20th centuries.

European works by 19th, 20th and 21st century artists.

Contemporary works by the country's leading artists, representing a wide range of subjects, styles and mediums.

Including a wide range of contemporary art prints.

Picture framing of the highest quality at reasonable prices as well as hand-made frames for special works.

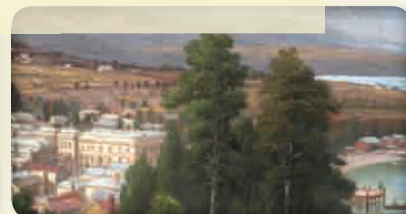
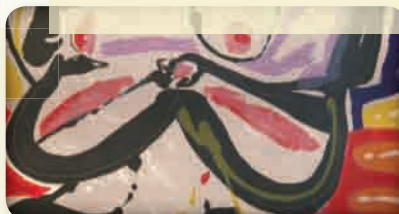
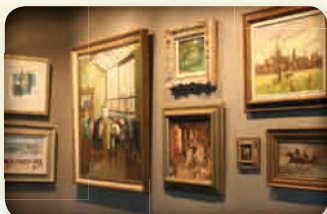
We can offer expert advice on condition and arrange restoration work.

Appraisals and valuations undertaken for all purposes.

Aesthete Gallery - at the heart of fine art

HAMILTON

Corner of Victoria and Rostrevor Streets





FINE ART SOCIETY
NEW ZEALAND

WAIKATO ART AUCTION SEPTEMBER 2012

Welcome to Waikato Art Auction 2012. We are pleased to be able to offer another great collection to our Waikato, National and International collectors. The continued success of our Waikato auctions means we have attracted many good paintings from all over the country.

The economy continues to be sluggish in most areas and uncertainty in financial markets seems to be an on-going fact of life. It is reassuring to see the market for fine art continues to show strength and stability, with new records constantly being set both here and internationally.

Overall the art market has shown resilience in the face of tough trading conditions, however collectors are becoming more discerning of both quality and price. It is not true to say that all art is an investment, but with good advice and astute buying collecting art can be both enjoyable and rewarding.

Much of the art offered for sale in this catalogue has come from various estates and private collections, largely in the Waikato area. We believe the estimates to be very realistic and a number of lots are being sold without reserve. We are confident you will find something worthy of interest.

We look forward to welcoming you to the viewing and seeing you at the auction. If you have any queries please don't hesitate to contact myself or the staff at Aesthete Gallery Hamilton.

Grant Bezett
Director
Fine Art Society New Zealand

grant@fineartsociety.net
www.fineartsociety.net

VIEWING HELD AT

Aesthete Gallery Hamilton

cnr Victoria & Rostrevor Sts
Hamilton

**Saturday 15th September to
Sunday 23rd September
Daily: 10am – 4pm**

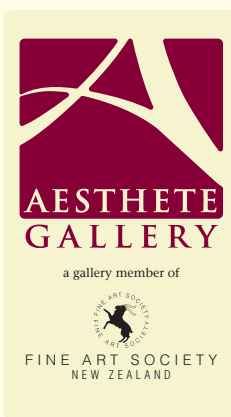
**Viewing on day of sale
Monday 24th: 9am – 1pm**

Ph: 07 839 0730

Fax: 07 839 0731

www.aesthete.co.nz

info@aesthete.co.nz



AUCTION HELD AT

**Monday 24th September 2012
commencing 6.30pm**

RSA Rooms

Rostrevor Street
Hamilton

Ph: 0800 377 483

Steve Davies
Licensed Auctioneer





1
Alice F Whyte
1880-1952
Ngaruawahia Bridge
Watercolour
Signed,
titled verso
16 x 24cm
\$200 - 400



2
Craig Primrose
NZ 20thC
Home Time, Taiharuru
Oil on board
Signed and dated '81
34 x 43cm
\$300 - 500



3
Ernest Vogel
Aus 1909-1993
Australian Farm Scene
Watercolour
Signed
17 x 23cm
\$250 - 400



4
George F Nicholls
Exh. 1885-1937
A Quiet Street, Edinburgh
Watercolour
Signed
34 x 24cm
\$300 - 500



5
Pat Cowan
NZ 20thC, *From The Lake Roadhouse*
Watercolour, Signed, 33 x 42cm, \$100 - 300



6
Peter Price
British 20thC, *Bathing at Torquay*
Oil on board, Signed, 29 x 39cm, \$800 - 1200



7
B Banzy
European 19thC
Riverside Town
Oil on canvas
Signed, 25 x 40cm
\$300 - 500

8
C Pickworth
NZ 20thC
Droving the Sheep
Oil on canvas
Signed
28 x 22cm
\$250 - 400





9

Charles McKenzieNZ 20thC, *After the Snow, The Remarkables*

Oil on board, Signed and dated 1981, 35 x 45cm, \$250 - 500



10

Peter WallersNZ 20thC, *Lake Wakatipu*, Oil on board

Signed and dated '81, 39 x 55cm, \$250 - 500



11

Lynne Sinclair-TaylorNZ 20thC, *Rocky Beach, The Mount*

Oil stick, Signed, titled verso, 32 x 66cm, \$200 - 400



12

Emidio Ruggieri

Italian 20thC

Floral Still Life

Oil on board

Signed and

dated 1977

34 x 24cm

\$250 - 500

13

Christine Smith

NZ 20thC

Green Villa

Oil on board

Signed and

dated 1975

60 x 40cm

\$300 - 600



14

Artist Unknown

C1910

*Brigantine near**Rangitoto*

Oil on Panel

Unsigned

17 x 25cm

\$200 - 400



15

**Samuel J
Lamorna Birch**

1869-1955

*Shag River, near**Palmerston South*

Watercolour

Signed and titled

18 x 26cm

\$250 - 500



16

Arthur Perry

British b.1900

*Sidmouth,**Devon*

Watercolour

Signed

26 x 37cm

\$400 - 700



**17****Ida Carey**

1891-1982

The Artist's Mother

Oil on board

Cert of Authenticity verso

41 x 31cm, \$400 - 600

21**Michael Snow**

Canadian b.1929

*Winter Sun, Cricklade,**Andover; Watercolour*

Signed, dated verso

Feb 1977, 31 x 45cm

\$600 - 900

**18****Ida Carey**

1891-1982

The Artist's Father

Oil on board

Cert of Authenticity

verso

47 x 36cm

\$400 - 600

22**Ella Spicer**

1876-1956

*View of Rangitoto**from Anzac Ave,*

Watercolour

Signed, 29 x 37cm

\$400 - 600

**19****Ida Carey**

1891-1982

The Living Room

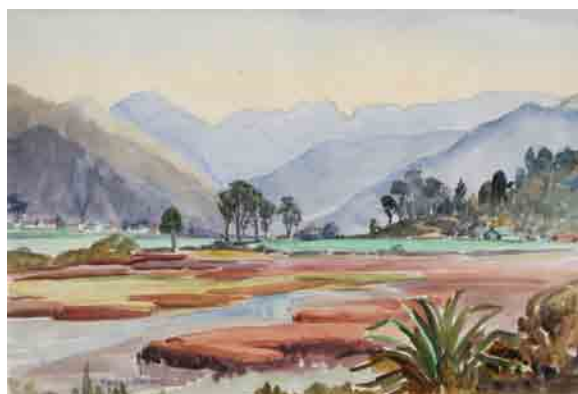
Oil on board

Cert of Authenticity

verso

39 x 48cm

\$400 - 600

**23****Peggy Spicer**1908-1974, *Whangamata Landscape*

Watercolour, Signed, 34 x 49cm, \$400 - 600

**20****Ida Carey**

1891-1982

*Rauwha**Tamaiparea,**Taranaki*

Oil on board

Cert of Authenticity

verso

51 x 39cm

\$800 - 1200

24**D' Hervilly**

French 19/20thC

On the Riviera

Oil on linen

Signed

30 x 40cm

\$500 - 800





25

M Dessurne

1825-1885

By the Waterfall

Watercolour

Signed and dated 1875

41 x 35cm, \$500 - 800



28

David HenshawNZ 20thC, *Rangatikei River*

Watercolour, Signed, 45 x 72cm, \$1000 - 1500



29

W F MooreNZ 20thC, *The Hollyford Valley*, Oil on board

Signed and dated '69, 50 x 70cm, \$300 - 600



26

Artist UnknownBritish 19thC, *The Capture of Rob Roy*

Oil on canvas, Unsigned, 40 x 55cm, \$1200 -1800



30

Pauline AdairNZ 20thC, *Sleeping Nude*, Pastel, Signed

36 x 51cm, \$400 -700



27

Owen R Lee

1918-2003

Portrait of Young Woman

Pencil

Signed

49 x 38cm

\$400 - 600

31

Pauline Adair

NZ 20thC

Nude Reading

Oil on board

Signed

32 x 56cm

\$400 - 700





32

Rod Hamel

NZ 20thC, *Maungakawa Hill, The Story of the Night*
Oil on hessian, Signed and dated verso 5/06
61 x 91cm, \$600 - 900



33

Rod Hamel

NZ 20thC, *A Late Snowfall*, Oil on board
Unsigned, 38 x 74cm, \$500 - 800



34

Lois McIvor

NZ 20thC, *West Coast Sunset*, Oil on canvas
Signed and dated 1987 verso, 60 x 120cm, \$600 - 900



35

Jens Sondergaard

Danish 1895-1957, *Scandinavian Sunset*
Oil on canvas, Signed, 39 x 70cm, \$400 - 700

36

Stanley Palmer

NZ 20thC
Anawhata 7/60
Bamboo Etching
Signed, titled
and dated 1972
40 x 54cm
\$600 - 900



37

Stanley Palmer

NZ 20thC
Inlet 14/30
2nd State
Bamboo Etching
Signed, titled
and dated 1973
36 x 49cm
\$600 - 900



38

Ola Swolf

NZ 20thC
Farmer
Watercolour
Signed
57 x 40cm
\$300 - 500



39

Josling Otway

NZ 20thC
Fishing Boats in the Viaduct Basin
Oil on board
Signed, dated
verso 1983
40 x 50cm
\$300 - 500





40
H. Linley Richardson
 1878-1947
Maori Wahine
 Pastel
 Signed, titled verso
 33 x 23cm
 \$300 - 500



41
Arthur Dagley
 1919-1998
Coastal Birds
 Acrylic on board
 Signed
 52 x 74cm
 \$1200 - 1800



42
Richard Dimmock
 British 20thC
Southampton Docks
 Oil on board, Initialled
 and dated '69, Paris
 Salon labels verso,
 50 x 60cm, \$800 - 1200



43
Tim Quirke
 SA 20thC
Nude on Blue Sofa
 Oil on board
 Monogrammed
 60 x 49cm
 \$600 - 900

44
Patricia France
 1911-1995
Laura
 Oil on board
 dated 1987 verso
 54 x 41cm
 \$4000 - 6000



45
Garth Tapper
 1927-1999
Old Lady in a Bath
 Ink on paper
 Titled, Cert verso
 18 x 27cm
 \$200 - 300



46
Garth Tapper
 1927-1999
Fiddle Di Da
 Ink on paper
 Titled, Cert verso
 20 x 22cm
 \$200 - 300



47
May Smith
 1906-1988
Dry Dock
 Watercolour
 Signed and
 dated '71
 45 x 45cm
 \$300 - 600





48

H W Kirkwood

1854-1925, *Appleby Waimea, West Nelson*, Oil on board
 Initialed, Titled verso, 14 x 31cm, \$800 - 1200



49

J C Hoyte

1835-1913, *Mt Egmont from Lake Mangamahoe*
 Watercolour, Signed, 25 x 45cm, \$6000 - 9000



50

Laurence W Wilson

1852 - 1912, *Paper Mill on the Leith River*
 Watercolour, Signed and titled
 37 x 33cm, \$7000 - 10000



51

Vera Cummings

1891-1949
Te Hira Te Kawau, a Chief of Tamaki Makaurau
 Oil on canvas, Signed
 20 x 15cm, \$4000 - 6000



52

Lois Davis

NZ 20thC, *Taranaki Coastal Scene*
 Oil on board, Signed and dated 1955
 43 x 45cm, \$200 - 500



53

Artist Unknown

Mt Egmont from a Taranaki Township
 Oil on board, dated May 22 1911
 verso, 28 x 40cm, \$300 - 500

**54****Walter Wright**

1866-1933

*Wakas Landing
near Ngaruawahia*

Watercolour

Signed and

dated 1910

22 x 31cm

\$4000 - 7000

**55****Laurence W Wilson**

1852-1912

*Mitre Peak from
the mouth of the
Arthur River*

Watercolour

Signed, titled

and dated 1888

33 x 50cm

\$5000 - 8000

**56****W G Baker**1864-1929, *Lake Taupo*

Oil on canvas, Signed and titled, 40 x 50cm, \$2500 - 4000

**57****J C Hoyte**1835-1913, *Sydney Harbour with a view of Royal Exhibition
Building*, Watercolour, Signed, 21 x 32cm, \$2500 - 4000

**58****W G Baker**1864-1929, *Travellers in Otira Gorge*

Oil on canvas, Signed and titled

102 x 138cm, \$10000 - 15000

61**H T Garratt**1875-1953, *Wanganui River*

Oil on board, Signed

19 x 34cm, \$200 - 400

**62****Thomas Cane**1830-1905, *Rouen Cathedral*

Watercolour. Signed and dated 1898

39 x 27cm, \$800 - 1200

59**J D Perrett**1859-1937, *Lake Manapouri*, Pastel, Signature indistinct, 22 x 66cm, \$600 - 900**60****J D Perrett**1859-1937, *Entrance to Southern Sounds*, Pastel, Signed, 31 x 68cm, \$800 - 1200

**63****John Gully**1819-1888, *Bowen Waterfall*, Watercolour

Signed and dated 1886, titled verso, 62 x 36cm, \$18000 - 22000

**64****Rix Carlton**1890-1962, *The Commerce Leaving Harbour*, 1933

Watercolour, Signed and dated 1933, 35 x 51cm

\$800 - 1200

68**Harold Septimus Power**

1878-1951

Cattle in a Landscape

Oil on board

Signed and dated

1896

26 x 41cm

\$300 - 600

**65****Charles Henry Howarth**1856 -1945, *Mount Cook from The Hermitage*

Watercolour, Signed, Titled verso

24 x 35cm, \$500 - 800

**66****Charles Henry Howarth**1856 -1945, *Rotten Tommy, South Island*

Watercolour, Cert of Authenticity verso

26 x 36cm, \$300 - 600

**67****W H Pratt (attributed)**1852 -1934, *Coastal Farm*

Watercolour, Initialled, 23 x 33cm, \$250 - 400





69
Michael Hight
 NZ 20thC
Mokau
 Oil on linen
 Signed and dated '08
 38 x 55cm
 \$4000 - 6000

73
Clive Arlidge
 NZ 20thC
Skeletal Trees
 Oil on board
 Signed verso
 92 x 60cm
 \$200 - 400



70
Philippa Blair
 NZ 20thC
Turnabout
 Oil on canvas
 Signed
 46 x 46cm
 \$1600 - 2000

74
Tony Fomison
 1939-1990
Untitled, c1978
 Pencil on paper
 From the artist's
 estate
 28 x 24.5cm
 \$6000 - 9000



71
Robert McDowell
 NZ 20thC
Rapaki Bay, Lyttelton
 Acrylic on board
 Signed dated '99 verso
 24 x 35cm
 \$500 - 800

75
Allen Maddox
 1948-2000
Untitled Purple Cross c1990
 Acrylic and
 Crayon
 41 x 29cm
 \$2500 - 3500



72
Fatu Feu'u
 NZ 20thC
Nua Nua Fagamalama
 Mixed media
 on canvas
 Signed
 102 x 76cm
 \$4500 - 5500

76
John Beaven Ford
 b.1930
Untitled
 Crayon and
 Watercolour
 Signed
 49 x 67cm
 \$800 - 1200





77

Rozi Demant

NZ 20thC, *Releasing the Vultures*, Acrylic on linen
Signed, 60 x 181cm, \$9,000 - 12,000



78

Rozi Demant

NZ 20thC
Black Scarf
Acrylic on linen
Signed
40 x 30cm
\$3000 - 4000

80

Robert Ellis

b.1929

Portrait of Young Woman

Acrylic on paper
Signed and dated '60
43 x 55cm
\$600 - 900



81

Robert Ellis

b.1929

*Woman**Sleeping*

Acrylic on paper
Signed and dated '60
60 x 47cm
\$600 - 900



82

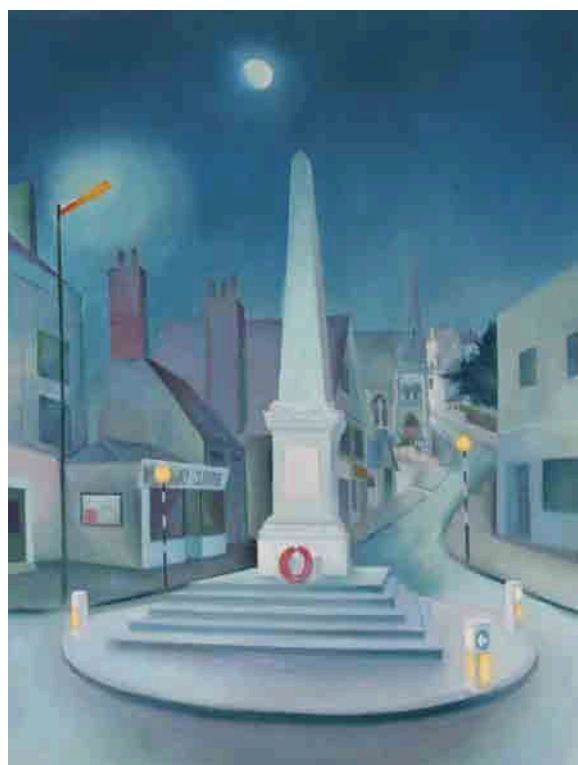
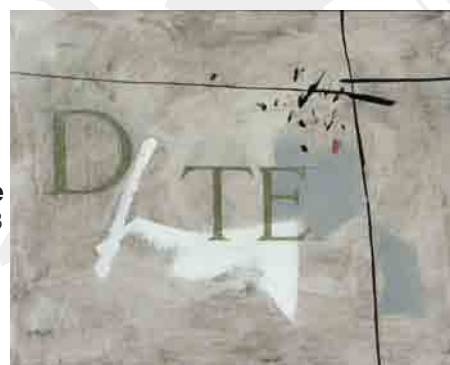
Alistair Minchie

French 1921-2008

D/TE

Mixed media

Signed
28 x 35cm
\$400 - 700



79

John Holmwood

1910-1987, *Westbury on Trym Nocturn*
Oil on canvas, Signed and titled verso
92 x 68cm, \$6000 - 9000

**83****Antony Warnes**

NZ 20thC

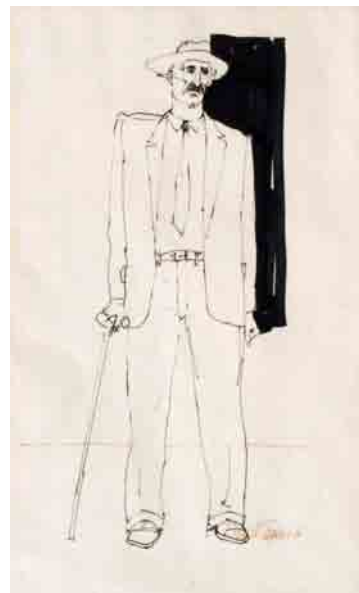
Under Tow in Stormy Seas

Oil on canvas

Signed and dated 1970

61 x 152cm

\$400 - 700

**88****Garth Tapper**

1927-1999

The Dally

Ink on paper

Signed and dated '86

29 x 18cm

\$300 - 600

**84****Eleanor Hughes**

1882-1959

English Village

Watercolour

Signed

24 x 36cm

\$250 - 400

**85****F Arnold**

British 19thC

Summertime

Watercolour and body colour

Signed and Titled

20 x 40cm

\$200 - 400

**86****Justin Summerton**

NZ 20thC

Hobbit Hole

Oil on canvas

Signed

65 x 85cm

\$3000 - 4000

**87****Josephine Davis**

b. 1959

Floral Impression

Oil on canvas

Signed

40 x 30cm

\$300 - 500

89**Daniel Goldstein**

USA 20thC

Window at Sunset 52/100

Collage edition

Signed, titled and dated

73 x 73cm

\$200 - 400

**90****Peter Waddell**

NZ 20thC

The Map Room

Pastel

Signed and dated MCMXCIII

30 x 30cm

\$250 - 400

**91****Peter Waddell**

NZ 20thC

The High Court

Pastel

Signed

30 x 30cm

\$250 - 400





92

Louis Edward ReaUSA 1868 - 1927, *Sheep Grazing*

Watercolour and body colour

Signed, 18 x 24cm, \$200 - 400



93

Alice Handcock

British 19thC

Bolton Abbey

Oil on canvas

Signed

36 x 46cm

\$200 - 400



94

Artist Unidentified

British 19thC

*Man and Dogs**on the Moors*

Watercolour

Unsigned

18 x 26cm

\$200 - 400



95

D Small

British 19thC

European River Town

Watercolour and

body colour

Signed

16 x 27cm

\$200 - 400



96

Robert Sansom

NZ 20thC

*High Country Hut,**Wakatipu NZ*

Pen and oil

wash on board

Signed and

titled

55 x 44cm

\$200 - 400



97

Annette IsbeyNZ 20thC, *Islands*, Oil on linen, Signed, 20 x 107cm, \$1800 - 2200

98

Thomas SydneyBritish 19thC, *The Ship Inn, Herne Bay*

Watercolour, Signed and titled, 24 x 66cm, \$300 - 500



99

Thomas SydneyBritish 19thC, *Robin Hood Bay*

Watercolour, Signed and titled, 24 x 66cm, \$300 - 500



100

G A TaylorNZ 20thC, *High Country Woolshed*

Oil on board, Signed, 45 x 91cm, \$250 - 400



101

Wayne Sinclair

NZ 20thC

*Kareranga**Valley*

Oil on board

Signed

indistinctly

45 x 61cm

\$250 - 400

The Old Blues that led to the All Blacks

A unique collector's edition

by **Sean Garwood**

Ultrachrome archival print on 310gsm Innova soft matt fine art paper. 405 x 550mm. Limited edition of 250

Each print individually signed and numbered by the artist

Published by



FINE ART SOCIETY
NEW ZEALAND



www.fineartsociety.net or visit Aesthete Gallery, Hamilton

WAIKATO INSURANCE BROKERS LIMITED

Are proud to be the insurance providers for
AESTHETE GALLERY HAMILTON and FINE ART SOCIETY NEW ZEALAND

PO BOX 1118 • 27 HARWOOD ST • HAMILTON 3240 • PH: 07 839 3627 • EMAIL: john@wibl.co.nz

For professional obligation-free advice on all your insurance requirements



WORLDWISE TRAVELLERS HEALTH and VACCINATION CENTRE

Gate 1, Anglesea Clinic
cnr Anglesea and Thackeray Streets, Hamilton

Phone 07 839 7761

Email: hamilton@worldwise.co.nz

Web: www.worldwise.co.nz

Proud Supporters of Aesthete Gallery



FINE ART SOCIETY
NEW ZEALAND



ABSENTEE BIDDING FORM

Name:.....

Address:.....

Phone:..... Mobile:.....

Fax: Email:

Please bid on my behalf at the *Waikato Art Auction 2012 September* sale for the lots listed below.

These bids are to be executed as cheaply as permitted by other bids or reserves.

I agree to comply with the Conditions of Sale as printed in this catalogue.

Bidding Number
(Will be issued for our reference)

Signed:.....

[illegible]

AUCTION HELD AT



a gallery member of



FINE ART SOCIETY
NEW ZEALAND

**Aesthete Gallery
Hamilton**

cnr Victoria &
Rostrevor Sts
Hamilton
Ph: 07 839 0730
Fax: 07 839 0731
www.aesthete.co.nz
info@aesthete.co.nz



FINE ART SOCIETY
NEW ZEALAND

Ph 0800 377 483
PO Box 9285
Newmarket
Auckland 1149
www.fineartsociety.net

RSA Rooms

Rostrevor Street
Hamilton
Ph: 0800 377 483

Steve Davies
Licensed
Auctioneer



WAIKATO ART AUCTION SEPTEMBER 2012



FINE ART SOCIETY
NEW ZEALAND

CONDITIONS OF SALE

The highest bidder shall be the buyer. In the event of any dispute as to the bidding in respect of any lot, that lot be offered again at the discretion of the auctioneer whose decision shall be absolute and final.

The auctioneer has the right:

1. To refuse any bid
2. To advance the bidding at his absolute discretion
3. To place a reserve on any lot
4. To place a bid or bids on behalf of the seller
5. To withdraw any lot from sale
6. To require a successful bidder to pay forthwith the whole or any parts of the purchase price

The auctioneer acts as the agent of the seller and the auctioneer nor the seller shall be responsible for any defects or faults in any lot or for any errors in the description of any lot and no compensation shall be paid in respect of same.

From the time of the lot being sold, such lot will be the responsibility of the buyer.

BUYERS' GUIDE

BIDDER REGISTRATION

All intending bidders are required to register for a bidding number prior to the auction commencing.

ABSENTEE BIDS

Absentee bidding can be arranged – please ask a member of staff for an *Absentee Bidding Form* or see overleaf. The Auctioneers will do its utmost to execute absentee bids for customers, however it will not be responsible if circumstances arise which result in failure to do so.

COLLECTION OR DELIVERY OF PURCHASES

Successful bidders may collect their purchases after making payment at the conclusion of the auction. Purchasers are required to settle their accounts and collect their purchases within 24 hours after the sale. Packing and freight can be arranged at the buyer's expense.

BUYERS' PREMIUM

A buyers' premium of 12.5% (plus GST) applies to all lots.

ESTIMATES

Estimates are provided as a guide only. They are prepared well in advance of the sale and are subject to revision at any time.

PAYMENT FACILITIES

EFTPOS is available for transactions up to \$2,000 which is the bank's daily limit. For transactions over that amount it is possible to pay by cheque where credit card details are provided as security and at the sole discretion of management. Visa and Mastercard are accepted on the understanding that a 2% surcharge applies.

VIEWING HELD AT

Aesthete Gallery Hamilton

cnr Victoria &
Rostrevor Sts
Hamilton
Ph: 07 839 0730
Fax: 07 839 0731
www.aesthete.co.nz
info@aesthete.co.nz

STAGED BY



FINE ART SOCIETY
NEW ZEALAND

Ph 0800 377 483
PO Box 9285
Newmarket
Auckland 1149
www.fineartsociety.net

AUCTION HELD AT

RSA Rooms

Rostrevor Street
Hamilton
Ph: 0800 377 483

Steve Davies
Licensed
Auctioneer



a gallery member of



FINE ART SOCIETY
NEW ZEALAND

WAIKATO ART AUCTION

SEPTEMBER 2012



Lot 72



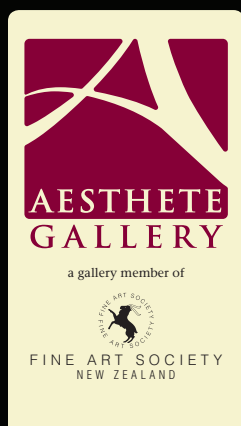
Proudly supported by The Rotary Club of Waikato Sunrise

Waikato Art Auction 2012 will assist in raising funds for youth related programmes

Viewing held at:

Staged by:

Auction held at:



Aesthete Gallery
Hamilton
cnr Victoria &
Rostrevor Sts
Hamilton
Ph: 07 839 0730
Fax: 07 839 0731
www.aesthete.co.nz
info@aesthete.co.nz



RSA Rooms
Rostrevor Street
Hamilton
Ph: 0800 377 483

Steve Davies
Licensed
Auctioneer

