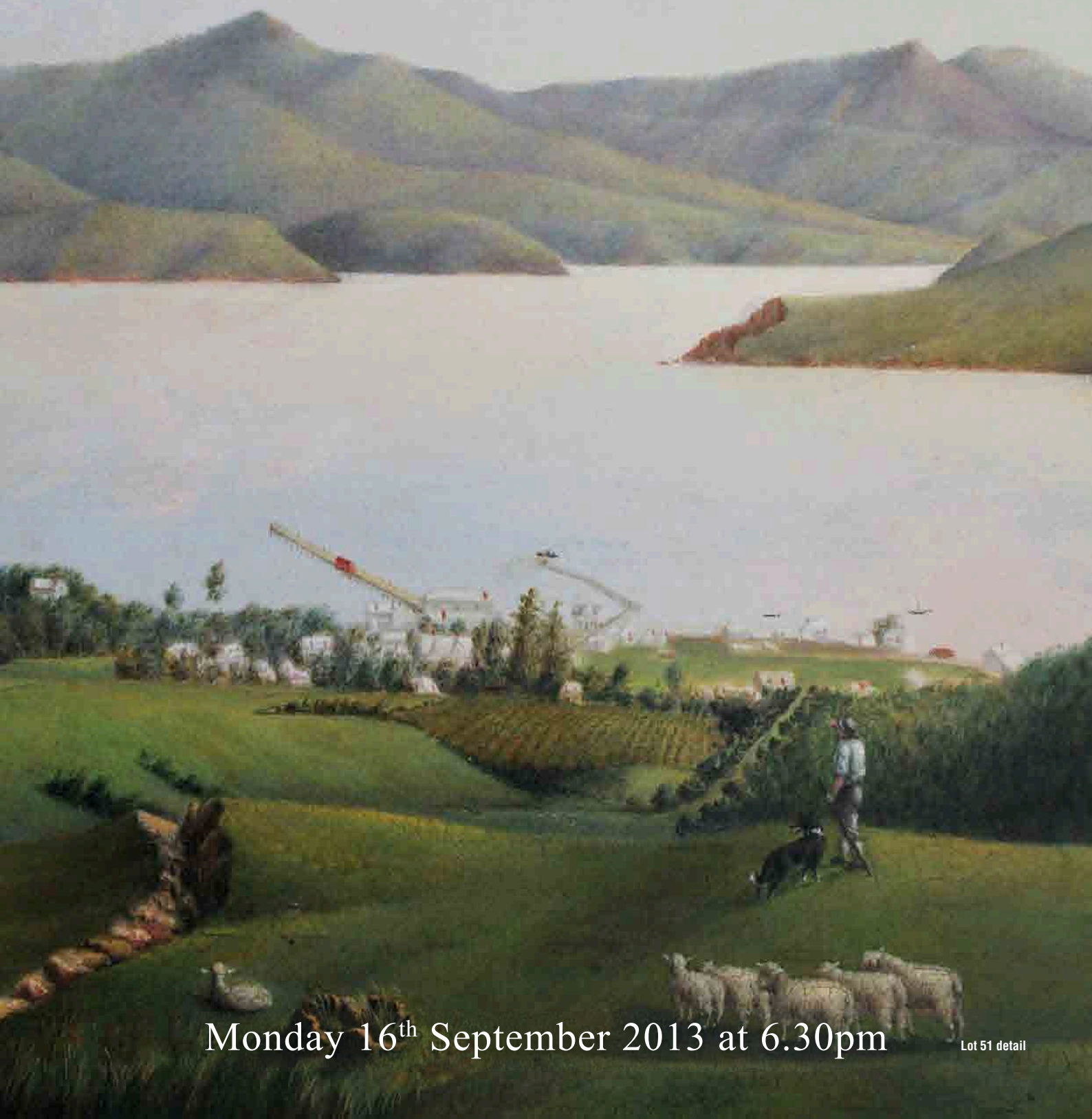




FINE ART SOCIETY
NEW ZEALAND

WAIKATO ART AUCTION 2013



Monday 16th September 2013 at 6.30pm

Lot 51 detail



FINE ART SOCIETY
NEW ZEALAND

WAIKATO ART AUCTION

SEPTEMBER 2013

Monday 16th September 2013 at 6.30pm



Proudly supported by The Rotary Club of Waikato Sunrise
Waikato Art Auction 2013 will assist in raising funds for youth related programmes

a gallery member of



AESTHETE GALLERY



HAMILTON

WAIKATO'S LEADING FINE ART GALLERY

Historical & Contemporary Fine Art

Early New Zealand works; colonial landscapes; early Maori portraits and examples of the best art produced in the late 19th and the 20th centuries.

European works by 19th, 20th and 21st century artists.

Contemporary works by the country's leading artists, representing a wide range of subjects, styles and mediums.

Including a wide range of contemporary art prints.

Picture framing of the highest quality at reasonable prices as well as hand-made frames for special works.

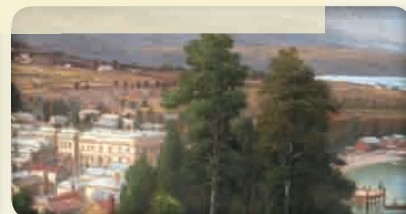
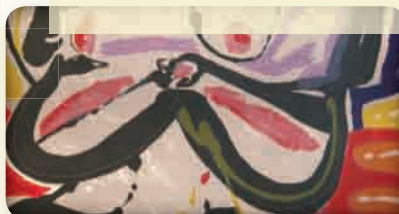
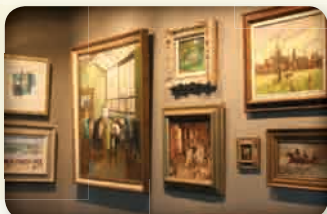
We can offer expert advice on condition and arrange restoration work.

Appraisals and valuations undertaken for all purposes.

Aesthete Gallery - at the heart of fine art

HAMILTON

Corner of Victoria and Rostrevor Streets





FINE ART SOCIETY
NEW ZEALAND

WAIKATO ART AUCTION SEPTEMBER 2013

Welcome to Waikato Art Auction 2013. We are pleased to once again offer a great collection to our Waikato, National and International collectors. The continued success of our Waikato auctions means we have attracted many good paintings from all over the country.

The economy seems to be finally showing signs of recovery and the art market is reflecting the increased levels of confidence, with new records continuing to be set both here and internationally.

It is particularly pleasing to have increasing numbers of local collectors becoming more aware that astute buying and collecting of art can be both enjoyable and rewarding.

Much of the art offered for sale in this catalogue has come from various estates and private collections largely in the Waikato area. There are some very interesting and rare paintings included in this sale. We believe the estimates to be very realistic and a number of lots are being sold without reserve. We are confident you will find something worthy of interest.

If you would like more information on any of the lots or advice on condition etc please don't hesitate to contact myself or the staff at Aesthete Gallery.

We look forward to welcoming you to the viewing and seeing you at the auction.

Grant Bezett
Director
Fine Art Society New Zealand

grant@fineartsociety.net
www.fineartsociety.net

VIEWING HELD AT

Aesthete Gallery Hamilton

cnr Victoria & Rostrevor Sts
Hamilton

**Saturday 7th September to
Sunday 15th September
Daily: 10am – 4pm**

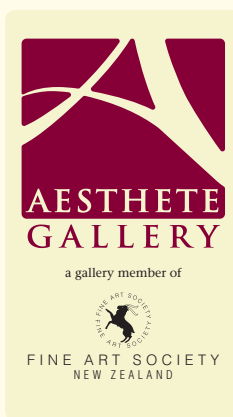
**Viewing on day of sale
Monday 16th: 9am – 1pm**

Ph: 07 839 0730

Fax: 07 839 0731

www.aesthete.co.nz

info@aesthete.co.nz



AUCTION HELD AT

**Monday 16th September 2013
commencing 6.30pm**

RSA Rooms

Rostrevor Street
Hamilton

Ph: 0800 377 483

Steve Davis

Licensed Auctioneer





1
Brian Millard
NZ 20thC
The Picket Fence
Watercolour
Signed
36 x 66cm
\$300 - 500



2
Clark Esplin
NZ b.1941
French Landscape
Watercolour
Signed
34 x 48cm
\$300 - 500



3
Margot Mountain
NZ 20thC
Evening Light
Ngaruawahia
Acrylic on board
Signed
39 x 57cm
\$400 - 700



4
L Abernethy
Aus 20thC
Still life with
Birdcage
Mixed Media
Signed
77 x 56cm
\$400 - 600

8
Jean Percival
NZ 20thC
Matilija Poppies
Watercolour
Signed
51 x 62cm
\$300 - 500



5
Neil Bartlett
NZ 20thC, *Central Otago Farm*
Oil on board, Signed, 40 x 50cm, \$300 - 500



6
Robert McDowell
NZ b.1935, *Tikoa Bay, Akaroa Harbour*
Acrylic on paper, Signed, 32 x 45cm, \$250 - 400



7
J M Madden
1856 - 1923, *Kaikoura Coast*, Pastel
Signed, 47 x 64cm, \$500 - 700





9
Brian Halliday
 NZ 20thC
Early Summer, Wanaka
 Oil on board
 Signed
 60 x 82cm
 \$800 - 1200



10
Harry Smith
 NZ 20thC
Top Muster, Arrowsmith Range
 Oil on board
 Signed
 48 x 74cm
 \$500 - 800



11
Josephine Davis
 NZ b1959, *Farm Scene near Opotiki*
 Watercolour, Signed, 33 x 51cm, \$400 - 700



12
J M Mountfort
 NZ 20thC, *Native Flowers*, Watercolour
 Signed, 29 x 36cm, \$200 - 350



13
Brian Halliday
 NZ 20thC, *Central Otago Landscape*
 Oil on board, Signed, 30 x 40cm
 \$250 - 400



14
Margaret Rhodes
 NZ 20thC, *Country Road*, Watercolour
 Signed, 26 x 35cm, \$250 - 400



15
Roy Sefton
 NZ 20thC, *Milford Sound*, Oil on board
 Signed, 37 x 50cm, \$300 - 500

16
Belmac
 European 20thC
Last Load for the Day Majorca
 Oil on canvas
 Signed
 59 x 74cm
 \$800 - 1200





17

Judith Roberts

Aust 20thC, *Mother and Daughter Climbing the Stairs*
 Watercolour, Signed, 53 x 42cm, \$400 - 600



18

Gaston de Vel

1924 - 2011, *Sunset in Northland*
 Oil on canvas, Signed, 38 x 45cm, \$800 - 1200



19

Kay Walsh

NZ 20thC, *Old Cottage Thames*, Watercolour
 Signed, 32 x 38cm, \$300 - 500

20

Margaret Rhodes

NZ 20thC
Otago Riverscape
 Watercolour
 Signed
 35 x 50cm
 \$300 - 500



21

Marjorie Naylor

NZ 20thC
Red Woolshed, Nelson
 Watercolour
 Signed
 25 x 30cm
 250 - 400



22

Tony Lewis

NZ 20thC
White Roses
 Watercolour
 Signed
 52 x 71cm
 \$400 - 600



23

Josephine Davis

NZ b1959, *Camelias*, Watercolour, Signed
 39 x 57cm, \$900 - 1400





24
Bradley Hall
Aus 20thC
Woolshed
Pastel
Signed
23 x 48cm
\$250 - 400



25
Robert L. Howey
1900 - 1981
Sunshower on the Lake
Gouache
Signed
36 x 46cm
\$400 - 600



26
Robert L. Howey
1900 - 1981
The Old Stone Bridge
Gouache
Signed
31 x 35cm
\$300 - 500



27
Unknown after Landseer
19thC
The Blacksmith
Oil on canvas
Unsigned
91 x 70cm
\$700 - 1000



28
Ida Carey
1891 - 1982, *In the Library*, Oil on board
Signed, 75 x 60cm, \$900 - 1400



29
May Smith
1906 - 1988, *Spinning Circle*, Watercolour,
Signed, 49 x 70cm, \$600 - 900



30
Joan Fear
NZ b1932
Morning Tea
Oil on board
Signed
58 x 54cm
\$800 - 1200



31
Lily Lewis
 NZ 20thC
Lake Pearson
 Watercolour
 Signed
 38 x 56cm
 \$300 - 500

35
Michael Smither
 NZ b1939
Mount Taranaki, '82
 Screenprint
 Initialled
 19 x 18cm
 \$700 - 1000



32
Peter O'Hagan
 1942 - 2013
Lunch at Neethlingshof Vineyard
 Gouache
 Signed
 43 x 53cm
 \$800 - 1200



36
Tom Burnett
 NZ 20thC, *Cable Bay*, Screenprint
 Signed & dated '89, 35 x 46cm, \$600 - 900



33
Peter O'Hagan
 1942 - 2013
Italian Rosé in Portofino
 Gouache
 Signed
 45 x 48cm
 \$800 - 1200



37
Tom Burnett
 NZ 20thC, *Mangonui*, Screenprint, Signed & dated '89, 33 x 46cm, \$600 - 900



34
Christine Smith
 NZ 20thC
Old House Queen Street
 Acrylic on board
 Signed
 44 x 55cm
 \$400 - 700



38
Stanley Palmer
 NZ 20thC, *Mangonui*, Etching
 Signed & dated '76, 47 x 67cm, \$600 - 900



39

Margaret Goldsmith

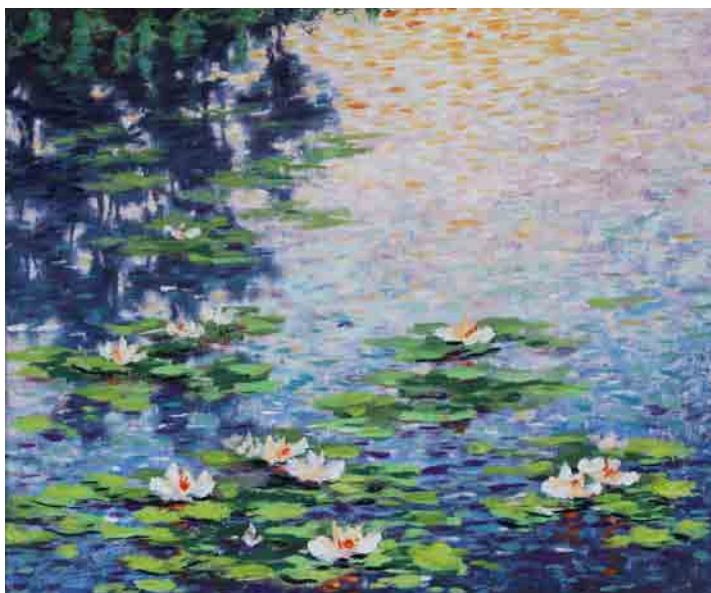
NZ 20thC, *Nude*, Watercolour & Pastel
Signed, 69 x 54cm, \$500 - 800



40

Kerry Argent

Aus b.1960
Elephant Playing and Singing
Watercolour
Signed
31 x 23cm
\$500 - 800



41

Randall Froude

NZ 20thC
My Lily Pond
Oil on canvas
Signed
50 x 60cm
\$600 - 900

42

Frank Crozier

Aus 1883 - 1948
Rural Scene
Oil on board
Signed
24 x 34cm
\$300 - 500



43

Tim Wilson

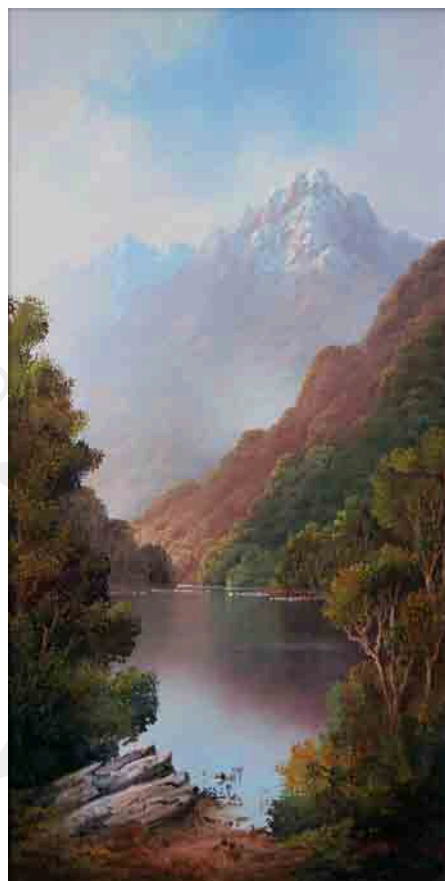
NZ 20thC
George Sound
Oil on canvas
Signed
42 x 32cm
\$1200 - 1800



44

Tim Wilson

NZ 20thC
George Sound 2
Oil on canvas
Signed
62 x 32cm
\$1500 - 2000





45

Arthur Victor Gregory

1867 - 1957, *The Joseph Craig in Stormy Seas*
 Watercolour, Signed, 42 x 63cm, \$3000 - 4500



46

John Gully

1819 - 1888, *Cathedral Peaks from near Stoney Point*
 Watercolour, Signed & dated 1887, 27 x 47cm, \$8000 - 12000



47

J C Hoyte

1835 - 1913
In the Sounds
 Watercolour
 Signed
 17 x 34cm
 \$2000 - 3000



48

J C Hoyte

1835 - 1913, *Caples River*, Watercolour
 Signed, 54 x 94cm, \$25000 - 35000



49

Gottfried Lindauer

1839 - 1926, *Probably Mere Kapa Ngamai II.*
 Inscribed verso Mareana Ngamai, Ngatai Rawiri Tribe,
 Te Ani AwaTribe, Taranaki.
 Oil on canvas, Signed, 68 x 54cm, \$45000 - 60000



50

J D Perrett

1859 - 1937, *George Sound*, Oil on
 board, Signed, 34 x 49cm, \$1200 - 1800

51**Samuel Coleridge Farr**

1827 - 1918

Pair; Scenes of Akaroa one circa 1856, second dated 1889

Oil on board

Signed

Each 25 x 33cm

\$30000 - 50000

We believe the first of these panoramas of Akaroa was painted some six years after Samuel Farr's arrival in Akaroa in 1850. The second view was painted in 1889 and shows the development that had taken place over the intervening years, much of which was planned and designed by Farr.

Samuel Farr has a number of firsts against his name: the first marriage in Canterbury, he designed Akaroa's first church, designed New Zealand's first iron verandahs, and he started Sunday schools in Canterbury. As a leading member of the Acclimatisation Society, he stocked almost every lake and river in Canterbury with fish and was instrumental in introducing the bumblebee to New Zealand.

There are examples of his work held by Turnbull Library, Akaroa Museum and the Fletcher Collection. Samuel Farr's work is very rare and these are the first works by him known to be offered at auction.

**52****Vera Cummings**

1891 - 1949

Hirawanu Kai Mokopuna

Oil on canvas

Signed

20 x 15cm

\$8000 - 12000

**53****Frank Wright**1860 - 1923, *Maori Life near Mercer*, Watercolour

Signed & dated 1906, 36 x 61cm, \$6000 - 9000



**54****Rix Carlton**

1890 - 1962, *Waikato River near Taupiri*
 Watercolour, Signed, 18 x 37cm, \$400 - 700

**55****Unknown**

NZ 19thC, *Milford Sound*, Oil on canvas
 46 x 86cm, \$600 - 900

**56****T D Ryan**

1864 - 1927
Lakes Okareka and Tarawera
 Watercolour
 Signed & dated 1891
 40 x 64cm
 \$800 - 1200

**58****A H O'Keefe**

1858 - 1941, *Portrait of a Young Man*
 Oil on canvas, Signed, 50 x 40cm, \$1800 - 2500

**59****A J Morrison**

NZ 19thC, *Lake Manapouri*, Oil on board
 Signed, 14 x 26cm, \$400 - 700

**57****W G Baker**

1864 - 1929
Milford Sound
 Oil on canvas
 Signed
 84 x 128cm
 \$6000 - 9000



60

John Weeks

NZ 1888 - 1965, *Avignon, another painting verso; Moroccan Scene*
 Oil on board, Signed, 35 x 57cm, \$8000 - 12000



61

John Weeks

NZ 1888 - 1965, *Burnt Sienna Walls*
 Watercolour, Signed, 19 x 25cm, \$500 - 800



62

Colin McCahon

NZ 1919 - 1987
Towards Auckland 2, 1958
 Watercolour
 Signed
 73 x 54cm
 \$40000 - 60000



63

Charles Tole

NZ 1903 - 1991, *Whakarewarewa*, Oil on board
 Signed, 28 x 23cm, \$4000 - 7000



64

Charles Tole

NZ 1903 - 1991, *Industrial Scene*
 Oil on board, Signed, 23 x 28cm
 \$4000 - 7000



65

Philippa Blair

NZ b.1945, *Horsemen*, 1988, Mixed media
Signed, 82 x 58cm, \$900 - 1400



67

Allen Maddox

NZ 1948 - 2000
Untitled, 1977
Oil on paper
Signed
61 x 45cm
\$6000 - 9000



68

Fatu Feu'u

NZ 20thC
Nua Nua Toosavili
Mixed media
on canvas
Signed
102 x 76cm
\$5000 - 6500



66

Fatu Feu'u

NZ 20thC
Ika Tapui
Mixed media
on canvas
Signed
92 x 46cm
\$3000 - 4500

70

Julian Dashper

NZ 1960 - 2009
Subaru Factory at Tip Top Corner
Oil on jute
Signed
39 x 30cm
\$4500 - 6000



69

Philippa Blair

NZ 20thC, *Lapsus linguae/Slip of the Tongue*, Oil on canvas, Signed
30 x 30cm, \$1200 - 1600



71

John Pule

Nuie b. 1962
Untitled, 1992
Oil on canvas
Signed
103 x 69cm
\$8000 - 12000

**72****Shane Cotton**

NZ b. 1964

*After NZ Barnett**Burns, 2005*

Oil on canvas

Signed

30 x 40cm

\$12000 - 15000

**73****Justin Summerton**

NZ 20thC

The Passing of Time

Oil on canvas

Signed

30 x 76cm

\$3000 - 4500

**74****Arthur Dagley**

1919 - 1998

Interior

Oil on board

Signed

60 x 90cm

\$3500 - 5000

75**Arthur Dagley**

1919 - 1998

Reclamation #1

Metal/Acrylic on board

Signed

176 x 157cm

\$5000 - 8000

**76****Simon McIntyre**NZ b. 1955, *Point to Point*, Oil on canvas

Signed, 61 x 50cm, \$800 - 1200

**77****Justin Summerton**NZ 20thC, *Metamorphosis*, Oil on canvas

Signed, 71 x 61cm, \$3500 - 5000

78**Max Gimblett**

NZ 20thC

*Giving Forth**by Pay*

Screenprint

Signed & dated

2007

76 x 56cm

\$1600 - 2000





79

Author Dagley1919 - 1998, *Composition C3*Acrylic on board, Signed
25 x 12cm, \$400 - 700

80

Author Dagley1919 - 1998, *Port Theme WS#8*Wood/Resin/Metal, Signed
31 x 61cm, \$600 - 900

83

Para MatchittNZ 20thC, *Untitled*, Aquatint

Signed, 46 x 41cm, \$400 - 700



81

Jorge Aguilar-AgonSpanish 20thC
*Landing the Catch*Oil on canvas
Signed
49 x 60cm
\$200 - 300

84

Brad Novak

NZ 20thC

*Tiki with Danus Plexippus wings*Screenprint
Signed & dated
2008
45 x 66cm
\$300 - 600

85

Guy Huze

1912 - 1997

*Tahitian Surf*Gouache
Signed
49 x 63cm
\$800 - 1200

82

Jorge Aguilar-AgonSpanish 20thC, *Drying the Nets*, Oil on canvas
Signed, 62 x 52cm, \$200 - 300

86

Blythe Fletcher

NZ 1890 - 1945

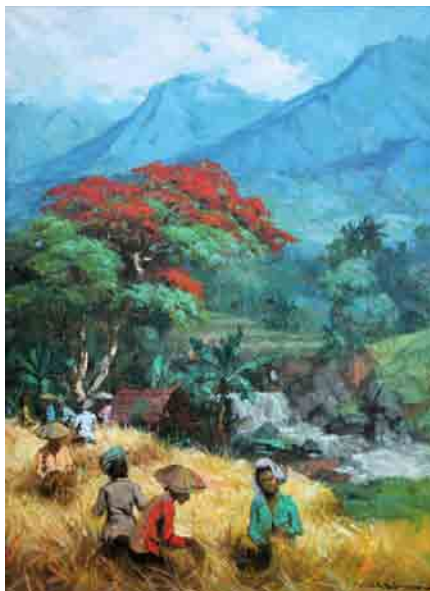
*European Street Scene*Watercolour
Signed
30 x 21cm
\$400 - 700



87
Stewart McKenzie Cullen
 NZ b.1949
A Windsor Farm
 Oil on board
 Signed
 30 x 58cm
 \$500 - 800



91
Robert McDowell
 NZ b.1937
Seated Nude
 Mixed media
 Signed
 56 x 39cm
 \$600 - 900



88
A Hasin
 20thC
Paddy Field
 Oil on canvas
 Signed
 91 x 68cm
 \$400 - 600



92
W S Ellis
 English 19thC
Cottage by the River
 Watercolour
 Signed
 16 x 33cm
 \$250 - 500



89
A Hasin
 20thC
Gate to the Temple
 Oil on canvas
 Signed
 90 x 63cm
 \$400 - 600



93
William Dalglish
 1860 - 1909
Boats on the Beach
 Watercolour
 Signed
 24 x 36cm
 \$400 - 600



90
Trix Brodie
 NZ 20thC
Spring Bouquet
 Oil on board
 Signed
 60 x 80cm
 \$200 - 400



94
S Hutchinson
 NZ 20thC
Still Life with Fruit Basket
 Oil on canvas
 Signed
 48 x 60cm
 \$600 - 900



CHARLES F. GOLDIE

1870 -1947

‘Memories, 1903’ (Harata Rewiri Tarapata)

**A strictly limited edition print produced
to the highest standard with pigmented inks on museum quality paper**

Ultrachrome pigmented ink archival print
308gsm Hahnemuhle rag-matt paper
Image 500 x 415mm
Paper size 620 x 515mm.

Each print is numbered on the image and
comes with a numbered certificate of
authenticity together with a replica copy
of the original 1904 catalogue

HERITAGE EDITIONS

a division of FINE ART SOCIETY NEW ZEALAND
PO Box 9285 Newmarket, Auckland 1149
www.fineartsociety.net

WAIKATO INSURANCE BROKERS LIMITED

Are proud to be the insurance providers for
AESTHETE GALLERY HAMILTON and FINE ART SOCIETY NEW ZEALAND

PO BOX 1118 • 27 HARWOOD ST • HAMILTON 3240 • PH: 07 839 3627 • EMAIL: john@wibl.co.nz

For professional obligation-free advice on all your insurance requirements



WORLDWISE TRAVELLERS HEALTH and VACCINATION CENTRE

Gate 1, Anglesea Clinic
cnr Anglesea and Thackeray Streets, Hamilton
Phone 07 839 7761
Email: hamilton@worldwise.co.nz
Web: www.worldwise.co.nz

Proud Supporters of Aesthete Gallery



ABSENTEE BIDDING FORM

Name:.....

Address:

Phone: Mobile:

Fax: Email:

Bidding Number
(Will be issued for our reference)

I agree to comply with the Conditions of Sale as printed in this catalogue.

Signed:.....

[illegible]

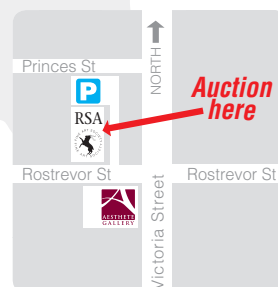
AUCTION HELD AT



Ph 0800 377 483
PO Box 9285
Newmarket
Auckland 1149

Rostrevor Street
Hamilton
Ph: 0800 377 483

Steve Davis
Licensed
Auctioneer





FINE ART SOCIETY
NEW ZEALAND

CONDITIONS OF SALE

The highest bidder shall be the buyer. In the event of any dispute as to the bidding in respect of any lot, that lot be offered again at the discretion of the auctioneer whose decision shall be absolute and final.

The auctioneer has the right:

1. To refuse any bid
2. To advance the bidding at his absolute discretion
3. To place a reserve on any lot
4. To place a bid or bids on behalf of the seller
5. To withdraw any lot from sale
6. To require a successful bidder to pay forthwith the whole or any parts of the purchase price

The auctioneer acts as the agent of the seller and the auctioneer nor the seller shall be responsible for any defects or faults in any lot or for any errors in the description of any lot and no compensation shall be paid in respect of same.

From the time of the lot being sold, such lot will be the responsibility of the buyer.

BUYERS' GUIDE

BIDDER REGISTRATION

All intending bidders are required to register for a bidding number prior to the auction commencing.

ABSENTEE BIDS

Absentee bidding can be arranged – please ask a member of staff for an *Absentee Bidding Form* or see overleaf. The Auctioneers will do its utmost to execute absentee bids for customers, however it will not be responsible if circumstances arise which result in failure to do so.

COLLECTION OR DELIVERY OF PURCHASES

Successful bidders may collect their purchases after making payment at the conclusion of the auction. Purchasers are required to settle their accounts and collect their purchases within 24 hours after the sale. Packing and freight can be arranged at the buyer's expense.

BUYERS' PREMIUM

A buyers' premium of 15% (plus GST) applies to all lots.

ESTIMATES

Estimates are provided as a guide only. They are prepared well in advance of the sale and are subject to revision at any time.

PAYMENT FACILITIES

EFTPOS is available for transactions up to \$2,000 which is the bank's daily limit. For transactions over that amount it is possible to pay by cheque where credit card details are provided as security and at the sole discretion of management. Visa and Mastercard are accepted on the understanding that a 2% surcharge applies.

VIEWING HELD AT

Aesthete Gallery Hamilton

cnr Victoria &
Rostrevor Sts
Hamilton
Ph: 07 839 0730
Fax: 07 839 0731
www.aesthete.co.nz
info@aesthete.co.nz



FINE ART SOCIETY
NEW ZEALAND

STAGED BY



FINE ART SOCIETY
NEW ZEALAND

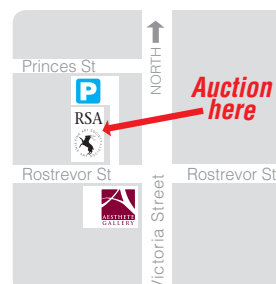
Ph 0800 377 483
PO Box 9285
Newmarket
Auckland 1149
www.fineartsociety.net

AUCTION HELD AT

RSA Rooms

Rostrevor Street
Hamilton
Ph: 0800 377 483

Steve Davis
Licensed
Auctioneer



WAIKATO ART AUCTION

SEPTEMBER 2013



Lot 60



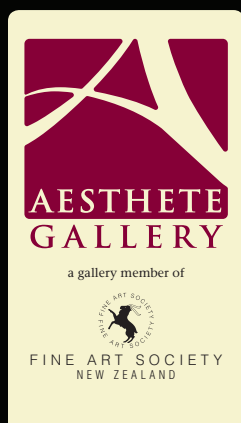
Proudly supported by The Rotary Club of Waikato Sunrise

Waikato Art Auction 2013 will assist in raising funds for youth related programmes

Viewing held at:

Staged by:

Auction held at:



Aesthete Gallery
Hamilton
cnr Victoria &
Rostrevor Sts
Hamilton
Ph: 07 839 0730
Fax: 07 839 0731
www.aesthete.co.nz
info@aesthete.co.nz



RSA Rooms
Rostrevor Street
Hamilton
Ph: 0800 377 483

Steve Davis
Licensed
Auctioneer

