



FINE ART SOCIETY
NEW ZEALAND

WAIKATO ART AUCTION 2016

Monday 19th September 2016 at 6.30pm



FINE ART SOCIETY
NEW ZEALAND

WAIKATO ART AUCTION

SEPTEMBER 2016





WE VALUE, BUY AND SELL FINE ART

See the most extensive range of paintings and prints available in the Waikato. Our fine art collection is complemented by a selection of art in other mediums including a wide range of sculptures and original glass works.

HISTORICAL

Early New Zealand works; colonial landscapes; early Maori portraits and examples of the best art produced in the late 19th and the 20th centuries.

European works by 19th, 20th and 21st century artists.

CONTEMPORARY

Contemporary works by the country's leading artists, representing a wide range of subjects, styles and mediums.

Including a wide range of contemporary art prints.

SERVICES

We offer a free in-gallery appraisal on all fine art.

We undertake formal valuations for insurance or estate purposes.

We can offer expert advice on condition and arrange restoration work.

Visit our new website

100s of artworks to browse

Plus the latest updates on Exhibitions and Events, Auctions and Gallery News

www.aesthete.co.nz

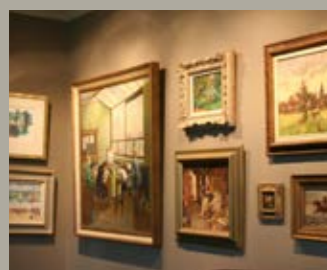
Opening Times

10am - 4pm
Tuesday, Wednesday,
Thursday and Friday

10 - 2pm, Saturday
or by appointment

Location

cnr Victoria and Rostrevor
Streets, Hamilton
Ph: 07 839 0730
Fax: 07 839 0731
info@aesthete.co.nz



FINE ART SOCIETY
NEW ZEALAND

WAIKATO ART AUCTION SEPTEMBER 2016

Welcome to Waikato Art Auction 2016. We are pleased to once again offer a great collection of art to our Waikato, National and International collectors. The continued success of our Waikato auctions means we continue to attract many good paintings both locally and from all over the country.

There seems to be a better outlook now for future diary prices which gives more stability to the local economy. The art market continues to reflect the overall confidence in the economy, with new records constantly being set both here and internationally.

It is particularly pleasing to have increasing numbers of local collectors becoming more aware that astute buying collecting art can be both enjoyable and rewarding.

The majority of the art offered for sale in this catalogue has come from various estates and private collections largely in the Waikato area. There are some very interesting and rare paintings included in this sale with many of them featuring local scenes, spanning over a century of artistic endeavour in the Waikato. We believe the estimates to be very realistic and a number of lots are being sold without reserve. We are confident you will find something worthy of interest.

We look forward to welcoming you to the viewing and seeing you at the auction. If you have any queries, please don't hesitate to contact myself or the staff at Aesthete Gallery Hamilton.

Grant Bezett
Director
Fine Art Society New Zealand

027 242 0033
grant@fineartsociety.net
www.fineartsociety.net

VIEWING HELD AT

Aesthete Gallery Hamilton
cnr Victoria & Rostrevor Sts
Hamilton

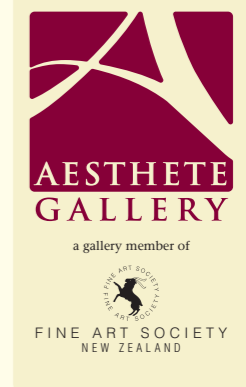
**Saturday 10th September to
Sunday 18th September**
Daily: 10am – 4pm

Viewing on day of sale
Monday 19th: 9am – 1pm

Ph: 07 839 0730

Fax: 07 839 0731

www.aesthete.co.nz
info@aesthete.co.nz



AUCTION HELD AT

Monday 19th September 2016
commencing 6.30pm

RSA Rooms
Rostrevor Street
Hamilton

Ph: 0800 377 483

Steve Davis
Licensed Auctioneer





1
Wallace T. Keown
NZ 20thC
The Remarkables from Speargrass Flat
Oil on canvasboard
signed
29 x 39cm
\$300 - 500



2
Peter Long
NZ 20thC
From the Road the Mount Cook Station
Oil on board
signed
27 x 36cm
\$300 - 500



3
Mike Stringfield
NZ 20thC
Lake Karapiro
Coloured pencils
signed
38 x 49cm
\$200 - 400



4
Antonio Napolitano
Italian 20thC, *Port at Sunset*, Oil on canvas
signed, 39 x 49cm, \$300 - 500



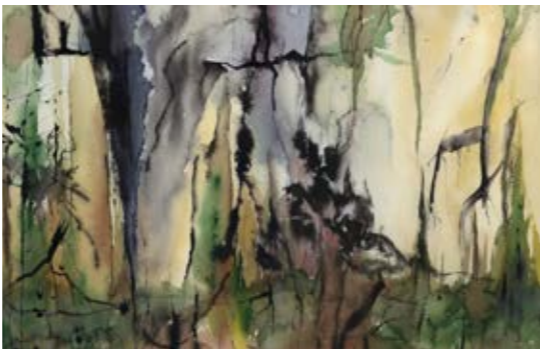
5
Dr. F.W. Wright
Exhibited 1871-79 ASA, *Northland Farm Scene*
Watercolour, signed, 26 x 35cm, \$200 - 400



6
George Lyles
British 20thC, *Village in Winter*, Watercolour
signed, 18 x 26cm, \$200 - 400



7
Wayne Sinclair
NZ 20thC, *Waikato River Scene*, Oil on board
signed, 30 x 39cm, \$250 - 400



8
Walter Figgins
NZ 20thC, *Summer in the Quarry*, Watercolour
signed, 27 x 44cm, \$200 - 400



9
T. Chamberlain
British b. 1933, *Yachts at Anchor*, 1974
Watercolour, signed, 23 x 34cm, \$200 - 400



10
Rowland Hilder
British 1905 - 1993
European Port Scene
Watercolour
signed
25 x 36cm
\$200 - 400



11
Alfred Montague
British 1832 - 1883
Village by the River
Oil on board
signed
18 x 34cm
\$200 - 400



12
Hans Brutsch
NZ 1928 - 2014
Sheepfarm, King Country
Oil on board
signed
25 x 34cm
\$250 - 400



13
Hans Brutsch
NZ 1928 - 2014
Shepherd's Cottage, Wairarapa
Oil on board
signed
25 x 34cm
\$250 - 400



14
Violet Watson
NZ 1906 - 1992
Victorian Roses
Oil on panel
signed
41 x 33cm
\$800 - 1200



15
John Tookey
British b. 1947, *The Docks of Dover*
Oil on board, signed, 21 x 28cm, \$250 - 400



16
H Prost
French 19thC, *Force, Energie par les produits Lavocat*, 1930, Stone Lithograph
signed, 92 x 69cm, \$300 - 500



17
Ron Gibbings-Johns
Aust 20thC, *Still Life Study*, Oil on board
signed, 49 x 60cm, \$1200 - 1800



18
Ethelwyn Doust
NZ 20thC
My Sitting Room
Oil on board
signed
42 x 34cm
\$250 - 400

22
Italian 20thC
Venice - The Grand Canal
Oil on board
signed
15 x 30cm
\$150 - 300



19
Unknown
British 20thC
The Smithy
Oil on board
unsigned
33 x 24cm
\$300-600



23
Peter O'Hagan
NZ 1942 - 2009, *Blue Balcony*, Watercolour
signed, 84 x 102cm, \$1500 - 3000



20
Beaver
NZ 20thC, *Freedom '85*, Pastel
signed, 48 x 62cm, \$200 - 400



21
Massoni
Italian 20thC, *Boats at Rest Venice*, Oil on canvas, signed, 50 x 70cm, \$800 - 1200



24
Douglas MacDiarmid
NZ b. 1922, *Dunvegan, Isle of Skye, '47*, Pen and wash
unsigned, 24 x 34cm, \$600 - 900



25
Gary Tricker
NZ b. 1938
Hihitahi Hillside II
Aquatint etching
3/10
signed
28 x 23cm
\$80 -250



26
Tim Wilson
NZ 20thC, *Pohangina Valley Marshes, Manawatu*
Oil on board, signed, 19 x 29cm, \$250 - 500



27
J. Wishart
NZ 20thC, *Autumn Trees*, Oil on board, signed
69 x 75cm, \$150 - 300



28
Jane Evans
NZ 1946 - 2012
Tropical Garden
Watercolour
signed
56 x 75cm
\$3000-5000



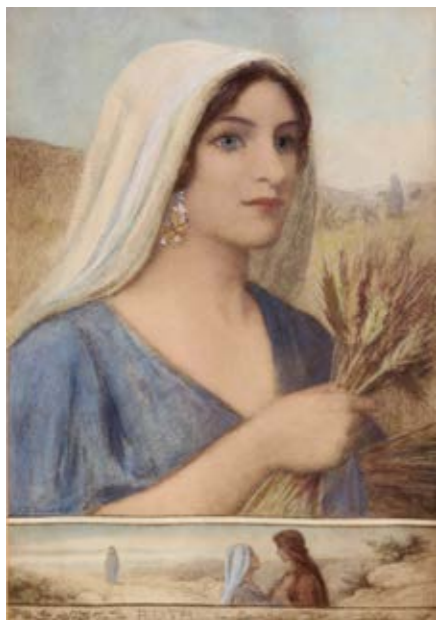
29
Jane Evans
NZ 1946 - 2012
Portrait of a Young Boy, 1979
Watercolour
signed
74 x 56cm
\$2000-3000



30
Rodney Hamel
NZ 20thC, *From the Top, Maungakawa Hill*
Oil on canvas, signed, 83 x 83cm, \$800 - 1200



31
Unknown
British 19thC
The Music Lesson
Watercolour
unsigned
30 x 23cm
\$200 - 400



32
George H. Edwards
British 1859 - 1918
Ruth
Pastel
signed
30 x 19cm
\$1200 - 1800



33
William Hounson Byles
British 1872 - 1925, *At the Village Well*
Oil on board, signed, 49 x 38cm, \$800 - 1200



34
Jan Nigro
NZ 1920 - 2012, *Kimberly Nude*, Oil stick on paper
signed, 52 x 75cm, \$2000 - 4000



35
John Tookey
British b. 1947
Suffolk Street, London
Pen and wash
signed
32 x 40cm
\$500 - 800



36
Gaston de Vel
1924 - 2010
Ramsay Bluff, Flinders Ranges, 1978
Oil on canvas
signed
33 x 44cm
\$300 - 500



37
David Barker
NZ b. 1941
Cavern, 1983
Acrylic on board
signed
52 x 64cm
\$800 - 1200



38
Ida H. Carey
NZ 1891 - 1982, *Self Portrait, 1946*, Oil on canvas
signed, 74 x 60cm, \$2500 - 5000



39
Ida H. Carey
NZ 1891 - 1982, *Aroha*, Oil on board
unsigned, 54 x 41cm, \$800 - 1200



40
Ida H. Carey, NZ 1891 - 1982
Portrait of a Young Woman, c1945, Oil on board, signed, 47 x 41cm, \$400 - 700



41
Phillip Holmes
NZ 20thC
Portrait of a Man
Oil on board
signed
21 x 16cm
\$300 - 500



42
Daisy Osborn
NZ 1888-1957, *Backyards, Christchurch*, Oil on board
signed, 35 x 39cm, \$800 - 1200

43
George E. Pruden
NZ1872 -1957
Burn off, King Country
Oil on canvas
signed & dated 1908
92 x 178cm
\$12000 - 18000



44
Walter Wright
1866 - 1933, *Maoris Near Taupiri*
Watercolour, signed, 27 x 40cm, \$3000 - 5000



45
J. E. Moultray
Scottish 1865 - 1922
Early Morning on the Coast
Oil on board, signed
14 x 22cm, \$500 - 800



46
J.E. Moultray
Scottish 1865 - 1922, *Waitaki Beach*
Oil on board, signed, 14 x 22cm, \$500 - 800



47
L.W. Wilson
NZ 1950/52-1912, *Lake Mintaro*
Clinton Valley, Oil on Canvas, signed
33 x 43cm, \$2000 - 4000



48
L.W. Wilson
NZ 1950/52-1912, *Church at Salt Lake*
Watercolour, signed, 16 x 32cm, \$300 - 500

49
William Joseph Wadham
British 1864 - 1950
Maori Princess, Rotorua
Watercolour
signed
43 x 26cm
\$300 - 500



50
Kennett Watkins
NZ 1847 - 1933
Bush Walk
Watercolour
Initialed
24 x 17cm
\$800 - 1200



51
W.G. Baker
NZ 1864 - 1929, *Farm near Taihape*, Oil on canvas
signed, 45 x 60cm, \$1800 - 3000



52
C.F. Goldie
NZ 1870 - 1947, *A Good Joke*
Lithographic print, 1912, 38 x 30cm, \$800 - 1400



53
C.F. Goldie
NZ 1870 - 1947
A Hot Day
Lithographic print
CAS collection 1904
38 x 32cm
\$600 -900

54
Edmund T Gouldsmith
1852-1932
Droving near Nelson Lakes
Oil on canvas
signed
55 x 87cm
2000-3000



55
J.D. Perrett
NZ 1859 - 1937
Otago Farm
Oil on canvas
signed
29 x 44cm
\$300 - 500



56
J.D. Perrett
NZ 1859 - 1937
Dart Valley
Oil on canvas
signed
24 x 35cm
\$300 - 500



57
J.D. Perrett
NZ 1859 - 1937
River Scene
Oil on canvas
signed
25 x 29cm
\$300 - 500



58
John Gully
NZ 1819 - 1888
Milford Sound
Watercolour
signed
28 x 40cm
\$22000 - 28000



59
John Gully
NZ 1819 - 1888, *The Minaret Peaks, Wanaka*
Watercolour, signed, 28 x 39cm, \$5000 - 8000



60
Charles Heaphy
British 1820 - 1881, *A View of Part of the Town of Wellington, 1844*, Lithographic print, 42 x 54cm, \$800 - 1200



61
L.W. Wilson
NZ 1950/52-1912, *Wesport Plains*, Watercolour
signed, 19 x 33cm, \$1800 - 3000



62
James M. Madden
British 1856 - 1923, *Head of Dusky Sound*
Oil on board, signed, 45 x 29cm, \$900-1400



63
Geoff Williams
NZ b. 1957, *Repose II*, Graphite
signed, 31 x 50cm, \$2000-3000



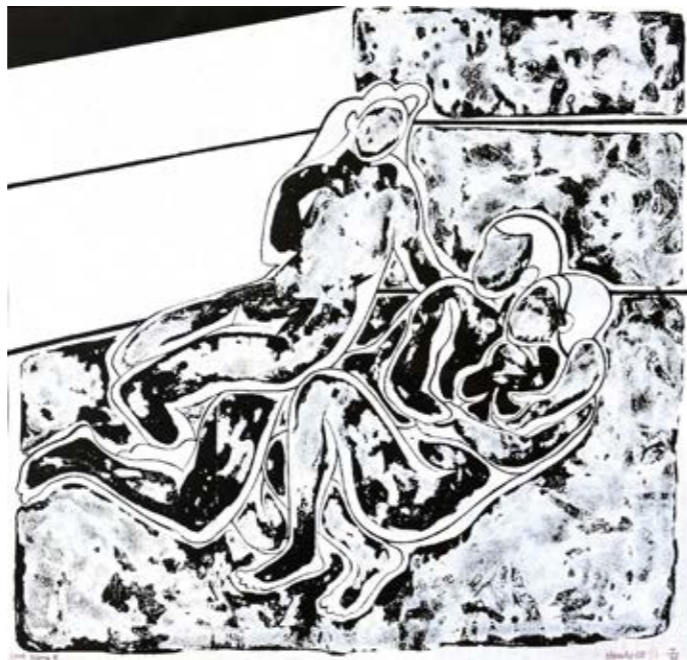
64
Geoff Williams
NZ b. 1957
Cherries
Graphite
signed
26 x 45cm
\$1000-1500



65
Barry Cleavin
NZ b. 1939
Jeanette Looking,
1977
Aquatint etching 4/6
signed
33 x 48 cm
\$200 - 400



66
John Tarras
NZ 20thC
A Nymph
Bronze
signed
10 x 8 x 5cm
\$400 - 600



69
Pat Hanly
NZ 1932 - 2004
Love Scene B 1968
Screenprint
signed
51 x 66cm
\$4000 - 6000



67
Grahame Sydney
NZ b. 1948, *Family Doll*, Etching
signed, 14 x 30cm, \$100 - 250



68
Pat Hanly
NZ 1932 - 2004, *Bride and Groom*
Screenprint, signed, 69 x 53cm, \$4000 - 6000



70
Colin McCahon
NZ 1919 - 1987
15 Drawings: December '51 to May '52
Lithographic print
Hocken Library 1976
26 x 20cm
\$1500 - 2500



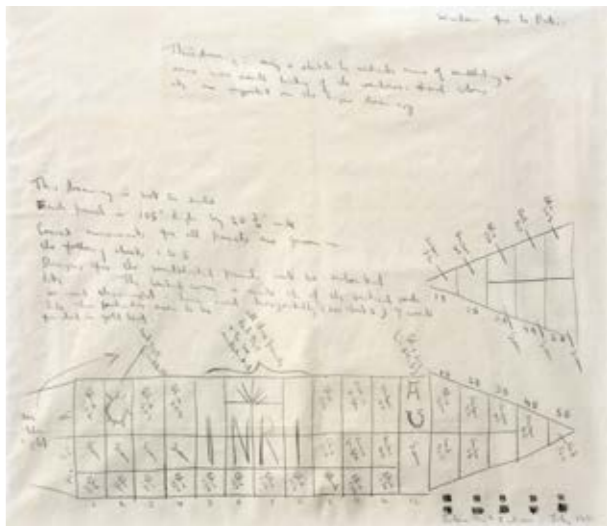
71
Doris Lusk
NZ 1916 - 1990, *A Waterfall Near Queenstown*, Watercolour
signed, 55 x 36cm, \$3000 - 5000



72
Don Driver
NZ b. 1930
Jasper Johns, 71
Collage
signed
41 x 34cm
\$800 - 1200



73
Garth Tapper
NZ 1927 - 1999
Thursday
Oil on board
signed
38 x 28cm
\$5000 - 8000



74
Colin McCahon
NZ 1919 - 1987
Drawing for Te Puke Church Window, 1970
Pencil on paper
signed
44 x 52cm
\$9000 - 14000



75
Susan Goldberg
NZ b. 1957
Desert Road Series 3, '81
Oil on board
signed
60 x 60cm
\$300 - 500



76
Pat Hanly
NZ 1932 - 2004, *Ginkgo Lawn*, Watercolour, signed and dated 1985, 53 x 67cm, \$18000 - 25000



77
Robyn Gibson
NZ 20thC
Untitled
Oil on canvas
signed
167 x 152cm
1800-3000



78
Neil Frazer
Aust b. 1961
Red Pathfinder
Oil on canvas
signed
90 x 90cm
\$2000 - 4000

79
Gary Tricker
NZ b. 1938
Apples and Tea, '13
Aquatint etching
25/40
signed
18 x 21cm
\$80 -250



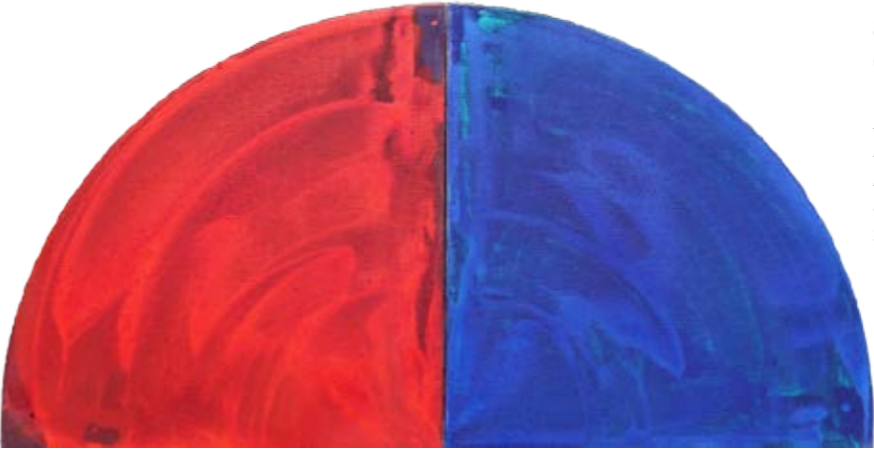
80
Michael Smither
NZ b. 1939
Rockpool I
Screenprint
1/21/75-128
Initialled
15 x 15cm
\$200 -400



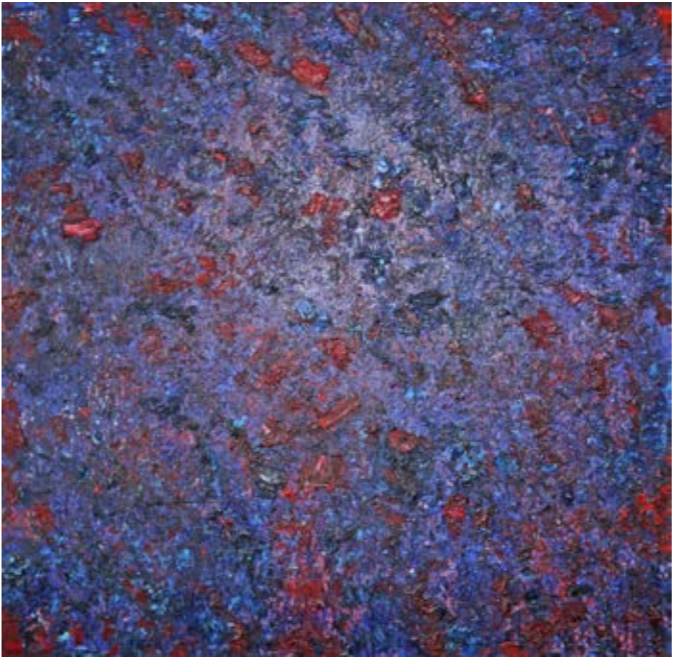
81
Michael Smither
NZ b. 1939
Rockpool II
Screenprint
1/16/75-128
Initialled
15 x 15cm
\$200 - 400



82
Farquhar
NZ 20thC, *Abstract III*, Oil on board, signed
148 x 119cm, \$1200-1800



83
Gretchen Albrecht
NZ b. 1943, *Study for Tangiers*, Oil on canvas
signed, 50 x 100cm, 8000-12000



84
Neil Frazer
Aust b. 1961, *Blue Shift*, Oil on canvas
signed, 184x184cm, \$3000 - 5000



85
Joan Lindsay
NZ 20thC, *Seabirds, '75*, Oil on board
signed, 50 x 68cm, \$1200-1800

86
Gary Tricker
NZ 20thC
Kauri, '76
Aquatint etching
A/P, signed
40 x 33cm
\$80 - 180



87
Sarah Anderson
NZ 20thC
Abstract Rock
Oil on canvas
signed
93 x 76cm
\$500-800



88
Ralph Hotere
NZ 1931 - 2013
Dawn/Water Poem
Litho 22/50
signed
37 x 23cm
\$900-1400





89
Mark Cross
NZ b. 1955, *Sunset*, Giclée print, signed
36 x 74cm, \$500-800



90
Don Binney
NZ 1940 - 2012
Kotuku
Puketotara
Screenprint
signed
50 x 70cm
4000-6000



91
Michael Smither
NZ b. 1939
Large Rockpool
Screenprint
Initialled
47 x 67cm
400-600



92
After Goldie
20thC
Ina Te Papatahi,
Nga Puhi
Oil on canvas
unsigned
40 x 30cm
\$1200 - 1800



96
Danielle Alarcon Dalvin
French 20thC
Golden Hat
Lithographic print
signed
20 x 28cm
\$80 - 180

93
Arthur Iles
NZ 1870 - 1938
Maori Maiden in Feather Cloak
Hand-coloured photo
Embossed
19 x 13cm
\$400-600



94
Paul van der Berg
Dutch 20thC
Man with Mask
7/40
Etching
17 x 12cm
\$200 - 400



95
Paul van der Berg
Dutch 20thC
Ambrosia
Etching 2/50
signed
7 x 6cm
\$200 - 400



FINE ART SOCIETY
NEW ZEALAND

ABSENTEE BIDDING FORM

Hand in to Aesthete Gallery | Fax to: 07 839 0731 | Email to info@aesthete.co.nz

Name:.....
Address:.....
.....
Phone:..... Mobile:
Fax: Email:

Bidding Number
(Will be issued for our reference)

Please bid on my behalf at the *Waikato Art Auction 2016 September* sale for the lots listed below.
These bids are to be executed as cheaply as permitted by other bids or reserves.
I agree to comply with the Conditions of Sale as printed in this catalogue.

Signed:.....

Lot No.	Artist/Description	\$ Bid Price (excluding Premium)
.....
.....
.....
.....
.....
.....
.....
.....
.....
.....

VIEWING HELD AT

AESTHETE GALLERY
a gallery member of
FINE ART SOCIETY
NEW ZEALAND

**Aesthete Gallery
Hamilton**
cnr Victoria &
Rostrevor Sts
Hamilton
Ph: 07 839 0730
Fax: 07 839 0731
www.aesthete.co.nz
info@aesthete.co.nz

STAGED BY

FINE ART SOCIETY
NEW ZEALAND

Ph 027 242 0033
PO Box 9285
Newmarket
Auckland 1149
www.fineartsociety.net

AUCTION HELD AT

RSA Rooms
Rostrevor Street
Hamilton

Steve Davis
Licensed
Auctioneer



FINE ART SOCIETY
NEW ZEALAND

CONDITIONS OF SALE

The highest bidder shall be the buyer. In the event of any dispute as to the bidding in respect of any lot, that lot be offered again at the discretion of the auctioneer whose decision shall be absolute and final.

The auctioneer has the right:

- 1. To refuse any bid
- 2. To advance the bidding at his absolute discretion
- 3. To place a reserve on any lot
- 4. To place a bid or bids on behalf of the seller
- 5. To withdraw any lot from sale
- 6. To require a successful bidder to pay forthwith the whole or any parts of the purchase price

The auctioneer acts as the agent of the seller and the auctioneer nor the seller shall be responsible for any defects or faults in any lot or for any errors in the description of any lot and no compensation shall be paid in respect of same.

From the time of the lot being sold, such lot will be the responsibility of the buyer.

BUYERS' GUIDE

BIDDER REGISTRATION

All intending bidders are required to register for a bidding number prior to the auction commencing.

ABSENTEE BIDS

Absentee bidding can be arranged – please ask a member of staff for an *Absentee Bidding Form* or see overleaf. The Auctioneers will do its utmost to execute absentee bids for customers, however it will not be responsible if circumstances arise which result in failure to do so.

COLLECTION OR DELIVERY OF PURCHASES

Successful bidders may collect their purchases after making payment at the conclusion of the auction. Purchasers are required to settle their accounts and collect their purchases within 24 hours after the sale. Packing and freight can be arranged at the buyer's expense.

BUYERS' PREMIUM

A buyers' premium of 15% (plus GST) applies to all lots.

ESTIMATES

Estimates are provided as a guide only. They are prepared well in advance of the sale and are subject to revision at any time.

PAYMENT FACILITIES

EFTPOS is available for transactions up to \$2,000 which is the bank's daily limit. For transactions over that amount it is possible to pay by cheque where credit card details are provided as security and at the sole discretion of management. Visa and Mastercard are accepted on the understanding that a 2% surcharge applies.

VIEWING HELD AT



**Aesthete Gallery
Hamilton**
cnr Victoria &
Rostrevor Sts
Hamilton
Ph: 07 839 0730
Fax: 07 839 0731
www.aesthete.co.nz
info@aesthete.co.nz

STAGED BY



AUCTION HELD AT

RSA Rooms
Rostrevor Street
Hamilton

Steve Davis
Licensed
Auctioneer

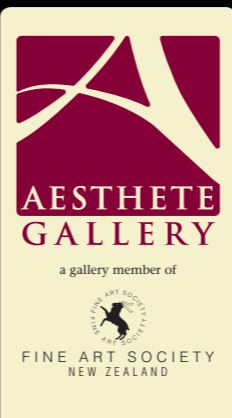


WAIKATO ART AUCTION SEPTEMBER 2016



Lot 38

Viewing held at:



**Aesthete Gallery
Hamilton**
cnr Victoria &
Rostrevor Sts
Hamilton
Ph: 07 839 0730
Fax: 07 839 0731
www.aesthete.co.nz
info@aesthete.co.nz

Staged by:



Auction held at:

RSA Rooms
Rostrevor Street
Hamilton

Steve Davis
Licensed
Auctioneer

