



FINE ART SOCIETY  
NEW ZEALAND



WAIKATO ART AUCTION  
2017





FINE ART SOCIETY  
NEW ZEALAND

# WAIKATO ART AUCTION

NOVEMBER 2017

Monday 20<sup>th</sup> November 2017 at 6.30pm

---

# WAIKATO'S HOME OF FINE ART



## WE VALUE, BUY AND SELL FINE ART

See the most extensive range of paintings and prints available in the Waikato. Our fine art collection is complemented by a selection of art in other mediums including a wide range of sculptures and original glass works.



### HISTORICAL

Early New Zealand works; colonial landscapes; early Maori portraits and examples of the best art produced in the late 19th and the 20th centuries.

European works by 19th, 20th and 21st century artists.



### CONTEMPORARY

Contemporary works by the country's leading artists, representing a wide range of subjects, styles and mediums.

Including a wide range of contemporary art prints.



### SERVICES

We offer a free in-gallery appraisal on all fine art.

We undertake formal valuations for insurance or estate purposes.

We can offer expert advice on condition and arrange restoration work.

### Visit our new website

100s of artworks to browse

Plus the latest updates on Exhibitions and Events, Auctions and Gallery News

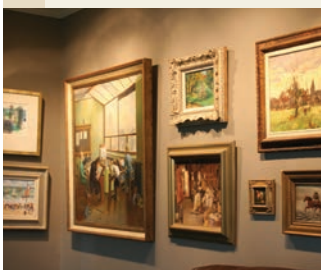
**[www.aesthete.co.nz](http://www.aesthete.co.nz)**

### Opening Times

10am - 4pm  
Tuesday, Wednesday,  
Thursday and Friday  
10 - 2pm, Saturday  
or by appointment

### Location

cnr Victoria and Rostrevor  
Streets, Hamilton  
Ph: 07 839 0730  
Fax: 07 839 0731  
[info@aesthete.co.nz](mailto:info@aesthete.co.nz)



  
FINE ART SOCIETY  
NEW ZEALAND





FINE ART SOCIETY  
NEW ZEALAND

# WAIKATO ART AUCTION NOVEMBER 2017

Welcome to Waikato Art Auction 2017. We are pleased to once again offer a great collection of art to our Waikato, National and International collectors. The continued success of our auctions means we are able to attract many good paintings from all over the country.

Despite ongoing changes in economic conditions world wide, the art market continues to be resilient with prices steadily rising.

Both nationally and internationally new records are being achieved, underpinned by consistent supply and demand at all levels.

This year one of the collections we were offered for the auction included a work by Charles Goldie. I had the privilege of offering this painting for sale forty years ago in my first Waikato exhibition of Maori portraits, held in Parnham Gallery on River Road in 1977. The Goldie featured on the front cover of that catalogue, as it does on the front cover of this year's auction catalogue.

There are many other good paintings in the auction, including a number of works by local artist Ida Carey. As well as notable works by important artists such as Ray Ching, Max Gimblett and John Gibb.

I'm confident you will find something worthy of interest.

We look forward to welcoming you to the viewing and seeing you at the auction. If you have any queries, please don't hesitate to contact myself or the team at Aesthete Gallery Hamilton.

Grant Bezett  
Director  
Fine Art Society New Zealand

027 242 0033  
grant@fineartsociety.net  
www.fineartsociety.net

## Viewing held at:

### Aesthete Gallery Hamilton

cnr Victoria & Rostrevor Sts  
Hamilton

Saturday 11<sup>th</sup> November to  
Sunday 19<sup>th</sup> November  
Daily: 10am – 4pm

Viewing on day of sale  
Monday 20<sup>th</sup> November:  
10am – 1pm

Ph: 07 839 0730  
Fax: 07 839 0731

www.aesthete.co.nz  
info@aesthete.co.nz



## Auction held at:

### RSA Rooms

Rostrevor Street  
Hamilton

**Monday 20<sup>th</sup> November 2017**  
**commencing 6.30pm**

**Steve Davis**  
Licensed Auctioneer





1

**John Horton**NZ 20thC, *Jerusalem, Wanganui*

Oil on board, Signed, 30 x 37cm, \$150 - 300



2

**Birtchnell Delph**NZ 1901 - 1996, *Beach Scene*, Watercolour

Signed, 35 x 53cm, \$200 - 300



3

**F. Slade**

British b. 1875

*Waterfall*

Watercolour

Signed

34 x 21cm

\$200 - 300

6

**Herbert Rogers**

NZ 19thC

*Australian**Landscape*

Watercolour

Signed

24 x 28cm

\$400 - 600



4

**Peggy Spicer**NZ 1908 - 1984, *Wet Day, Grey St, Hamilton*

Watercolour, Signed, 31 x 39cm, \$300 - 500



5

**Peggy Spicer**NZ 1908 - 1984, *Cottages*

Watercolour, Signed, 24 x 30cm, \$300 - 500







7

**Garrick Tremaine**NZ b. 1941, *Malagans Road*

Watercolour, Signed, 18 x 27cm, \$200 - 400



8

**Garrick Tremaine**NZ b. 1941, *Tidal Flats*

Watercolour, Signed, 36 x 55cm, \$400 - 600



9

**Garrick Tremaine**NZ b. 1941, *Boatshed by the Jetty*

Watercolour, Signed, 36 x 55cm, \$300 - 500



10

**Gaston de Vel**1924 - 2010, *Wanganui River*

Oil on canvas, Signed, 31 x 45cm, \$600 - 900



11

**Harry Smith**NZ 20thC, *Mustering for Docking*

Oil on board, Signed, 25 x 45cm, \$250 - 500

12

**Don Hill**NZ 20thC  
*Mustering in the High Country*Oil on board  
Signed  
41 x 34cm  
\$300 - 600





**13**

**Peter Beadle**

NZ b. 1933

*Shepherd's Hut*

Oil on board

Signed

44 x 60cm

\$700 - 1000



**14**

**Aston**

**Greathead**

NZ 1921 - 2012

*Amberley Farm,*

1969

Oil on board

Signed

27 x 40cm

\$300 - 500



**16**

**T. Minton**

19th/20thC British

*Farm Cottages*

Oil on board

Signed

40 x 20cm

\$400 - 700



**15**

**Richard Ponder**

NZ 20thC

*Routeburn Track and Mt Aspiring*

Oil on board

Signed

49 x 64cm

\$500 - 800





**17**

**John Speedy**

NZ b1940

*Pilot Bay, Mount Maunganui*

Oil on board

Signed

50 x 75cm

\$1200 - 1800



**18**

**John Speedy**

NZ b1940

*Blockhouse Bay*

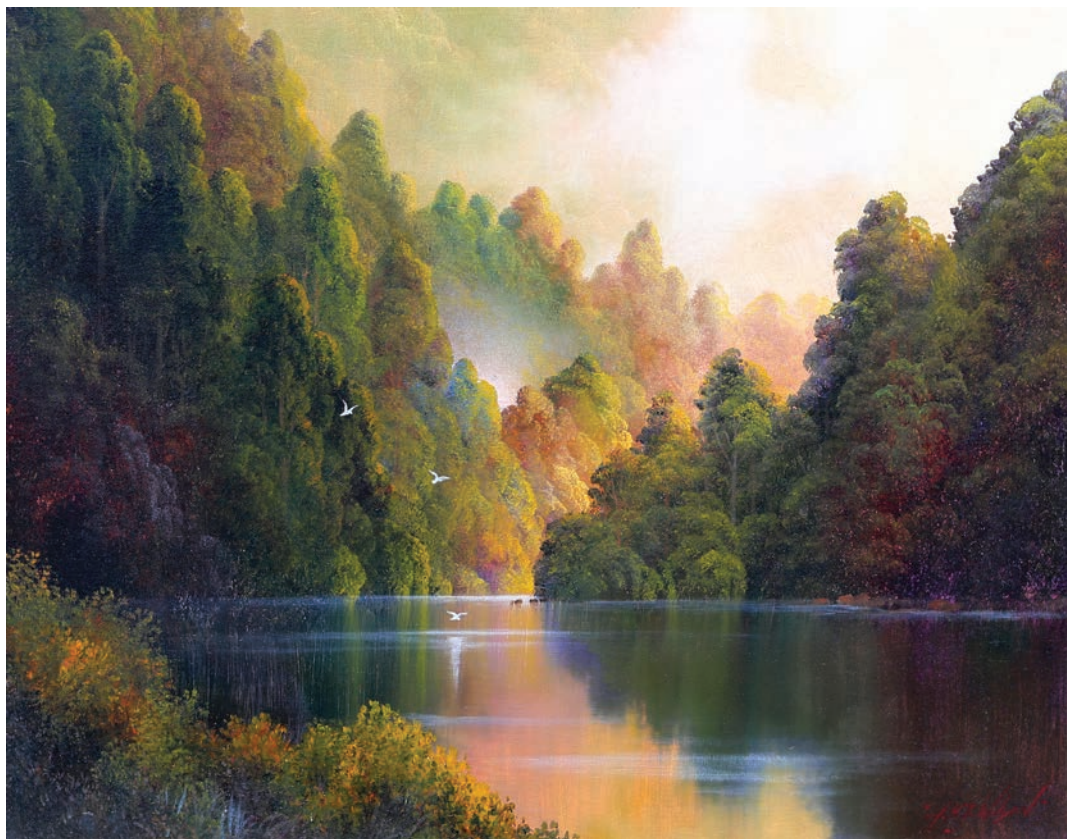
Oil on board

Signed

44 x 60cm

\$800 - 1200





**19**

**Tim Wilson**

NZ 20thC, *Rising Mist, Westland National Park*

Oil on board, Signed, 45 x 60cm, \$2500 - 4000



**20**

**Kevin Best**

Australian 1932 - 2012

*River Crossing*

Oil on board

Signed

30 x 40cm

\$500 - 800



FINE ART SOCIETY  
NEW ZEALAND





**21**

**Sue Schare**

NZ 20thC, *Musicians*

Oil on board, Signed, 75 x 58cm, \$500 - 800



**23**

**Sue Syme**

NZ 20thC, *The Encounter*

Acrylic on paper, Signed, 28 x 37cm, \$300 - 500



**22**

**Kate Jones-Madill**

NZ 20thC, *The Beach at the Bottom of the Garden*

Oil on canvas, Signed, 51 x 41cm, \$500 - 800

**24**

**Sue Syme**

NZ 20thC

*Woman on  
his Shoulder*

Acrylic on paper

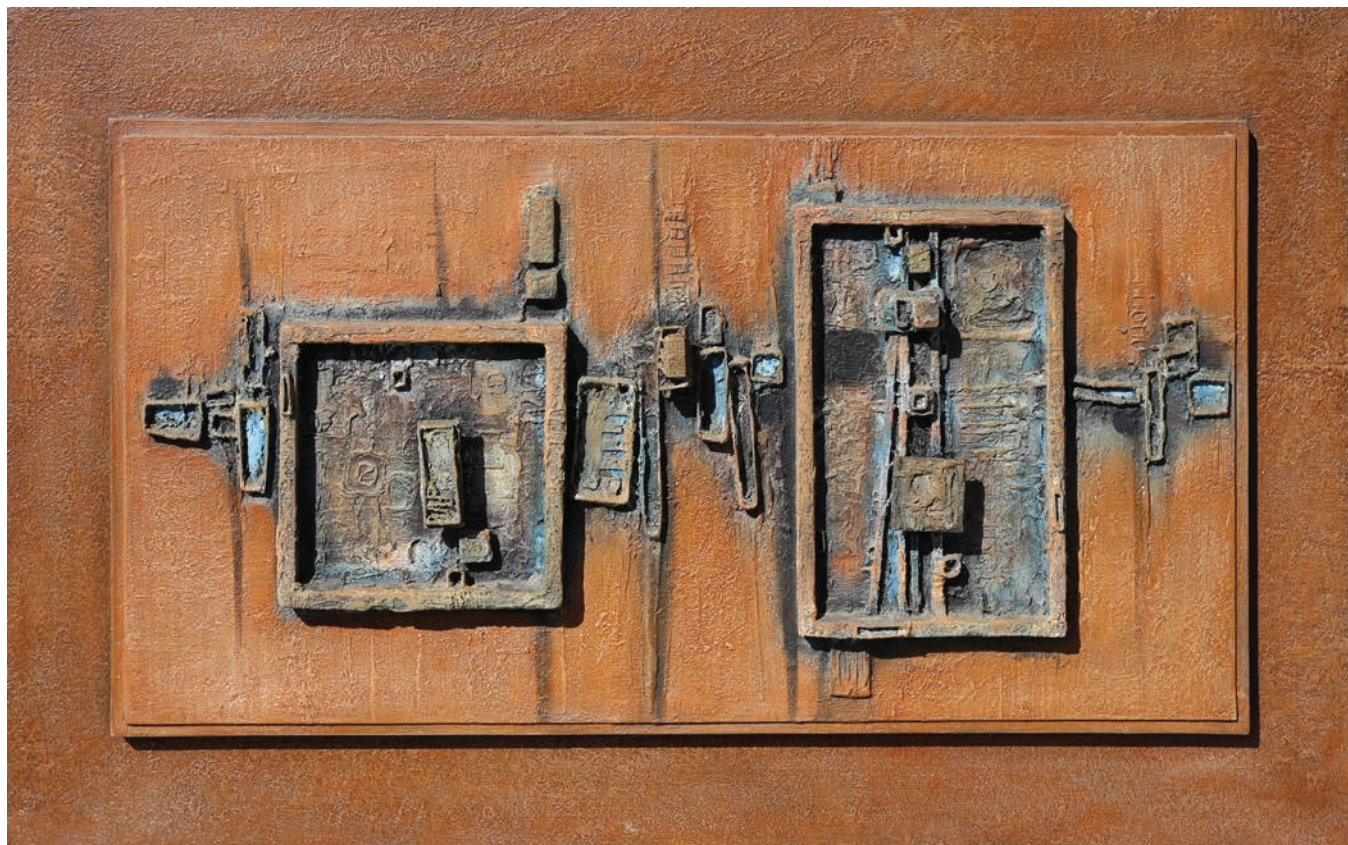
Signed

68 x 41cm

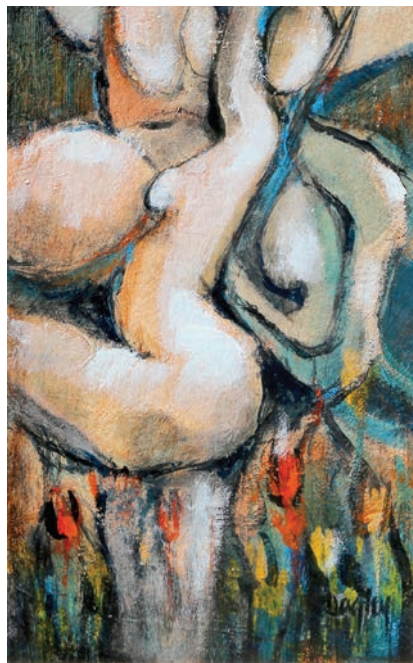
\$400 - 600







25

**Arthur Dagley**NZ 1919 - 1998, *Intergration No 4*, Metal, resin & wood, Signed, 73 x 120cm, \$3500 - 5000

26

**Arthur Dagley**

NZ 1919 - 1998

*Figures Dancing*

Acrylic on board

Signed

23 x 14cm

\$400 - 700

27

**Hayley Brown**

NZ 20thC

*Cat's Abode*

Oil on canvas

Signed

45 x 35cm

\$400 - 600

FINE ART SOCIETY  
NEW ZEALAND





**28**

**Ida H Carey**

NZ 1891 - 1982, *Princess Hera*

Oil on canvas, Cert verso, 56 x 44cm, \$3500 - 5000

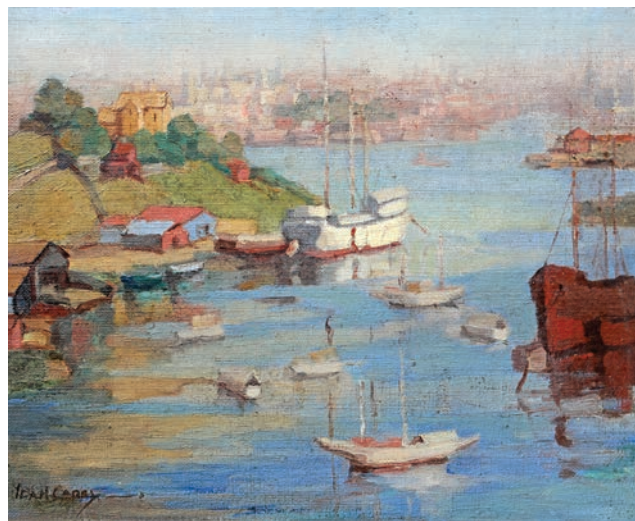


**29**

**Ida H Carey**

NZ 1891 - 1982, *Mother Reading*

Oil on board, Cert verso, 47 x 42cm, \$1200 - 1800



**30**

**Ida H Carey**

NZ 1891 - 1982, *Bald Spur, Sydney, Harbour*

Oil on board, Signed, 29 x 39cm, \$900 - 1200



**31**

**Ida H Carey**

NZ 1891 - 1982, *Chorus Girl*, 1954

Oil on board, Signed, 53 x 44cm, \$900 - 1200





32

**Ida H Carey**NZ 1891 - 1982, *Ponte Vecchio*

Oil on board, Signed, 40 x 48cm, \$1200 - 1800



33

**Ida H Carey**NZ 1891 - 1982, *Paddle Steamer, Rooses Landing*

Watercolour, Signed, 20 x 28cm, \$600 - 900



34

**Ida H Carey**

NZ 1891 - 1982

*Still Life*

Oil on board

Signed

36 x 45cm

\$600 - 900

35

**Ida H Carey**

NZ 1891 - 1982

*Venice - Santa Maria Della Salute*

Oil on board

Signed

45 x 30cm

\$1200 - 1800



36

**Ida H Carey**NZ 1891 - 1982, *Paris Street Scene*

Oil on board, Cert verso, 47 x 34cm

\$1200 - 1800





**37**

**Jeanette Blackburn**

NZ 20thC, *Identity Crisis*, Oil on board, Signed, 58 x 93cm, \$2000 - 3000



**38**

**Maude Sherwood**

NZ 1880 - 1956, *Roses in a Vase*  
Watercolour, Signed, 48 x 38cm, \$800 - 1200



**39**

**Maude Burge**

NZ 1865 - 1957, *Floral Study*  
Watercolour, Signed, 39 x 34cm, \$800 - 1200





40

**Kate Jones-Madill**NZ 20thC, *Our Beautiful Earth makes Beautiful Things*, Mixed media, Signed, 61 x 92cm, \$1200 - 1800

41

**Jan Nigro**

NZ 1920 - 2012

*The Gossips*, 1978

Mixed media

Signed

33 x 47cm

\$1800 - 2500

FINE ART SOCIETY  
NEW ZEALAND





**42**

**Raymond Ching**

NZ b. 1939, *The Australian Darter*, 1979

Watercolour, Signed, titled & dated, 72 x 50cm, \$8000 - 12000

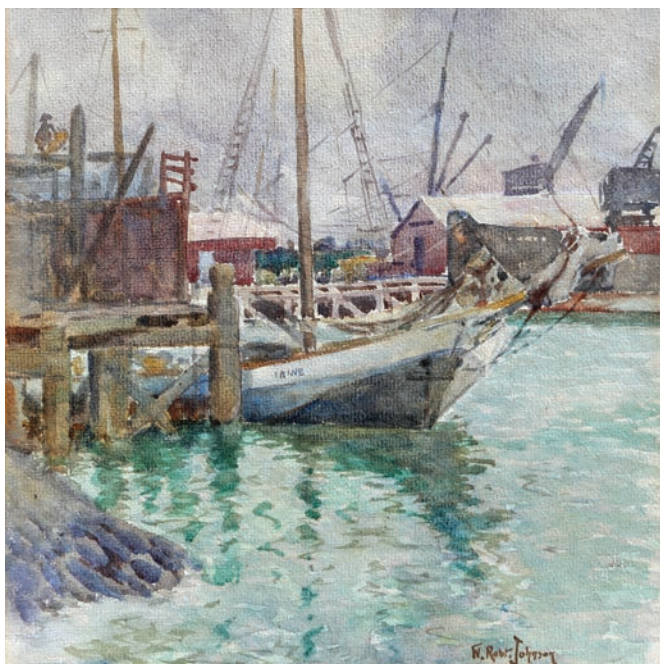


43

**Jos Kivits**NZ b. 1945, *Pair of Marine Scenes*

Oil on board, Signed

Each 21 x 25cm, \$1200 - 1800



44

**Robert Johnson**Aust 1890 - 1964, *King Dock, Woolloomooloo*

Watercolour, Signed, 26 x 24cm, \$800 - 1200



45

**Julian Drummond**British 1824 - 1906, *Cornish Fishermen*

Watercolour, Signed, 28 x 34cm, \$600 - 900



46

**G Hay**NZ 20thC, *Seascape with figures*

Oil on canvas, Signed, 25 x 45cm, \$300 - 500

FINE ART SOCIETY  
NEW ZEALAND





**47**

**Karl Rohwedder-Ruge**

German 1865 - 1940, *Fishing Boat at Sea*

Oil on canvas, Signed, 50 x 75cm, \$1200 - 1800



**48**

**Conelli**

19thC Italian, *Fishing on the Grand Canal, Venice*

Oil on canvas, Signed, 41 x 31cm, \$500 - 800



**49**

**W.H. Williamson**

British 1820 - 1883, *Shipping at the Channel Entrance*

Oil on canvas, Signed, 29 x 59cm, \$800 - 1200



**50**

**Garth Tapper**

NZ 1927 - 1999

*The Defence, Criminal Lawyer, 1983*

Acrylic, crayon, graphite

Signed & dated

29 x 24cm

\$3000 - 5000



**51**

**Peter McIntyre**

NZ 1910 - 1995

*Portrait of Boy*

Oil on board

Signed

62 x 44cm

\$7000 - 9000





**52**

**Charles Fredrick Goldie**

NZ 1870 - 1947, *Memories, Harata Rewiri Tarapata, 1911*  
Oil on board, Signed and dated, 20 x 15cm, \$180000 - 250000

Harata Rewiri Tarapata was a woman of mana and beauty, wife of a paramount chief of Auckland; Tuhaere and painted at least 11 times by Charles Goldie. This is the last known painting Goldie did of Harata and it was completed in the year that she died.

Unlike so many of Goldie's paintings, which are over adorned with sentiment, theatrical devices and almost pastiche Maori costume, in this painting she is dressed in clothing of the day with a scarf around her neck and a kauae carved into her chin representing her rangatira status. She is simply and empathetically portrayed.



53

**C F Goldie**

NZ 1870 - 1947, *A Good Joke*, Chromolithograph  
Original period frame, 38 x 32cm, \$2000 - 3000



55

**Vera Cummings**

NZ 1891 - 1949, *Wiremu Patara Te Tuhi, Ngati Mahuta*  
Oil on canvas, Signed, 30 x 23cm, \$14000 - 18000



54

**F. Murray**

NZ 20thC, *Maori Woman*  
Oil on board, signed, 50 x 40cm, \$200 - 400



56

**Frank Wright**, NZ 1860 - 1923

*Waterfall in Taraua near Otaki Forks*  
Watercolour, Signed, 41 x 57cm, \$1200 - 1800



FINE ART SOCIETY  
NEW ZEALAND





**57**

**John Gibb**

NZ 1831 - 1909, *Mount Cook from Glentanner*, Oil on canvas, Signed, 49 x 73cm, \$8000 - 12000



**58**

**W.G. Baker**

NZ 1864 - 1929, *Northland River Scene*  
Oil on canvas, Signed, 39 x 59cm, \$800 - 1200

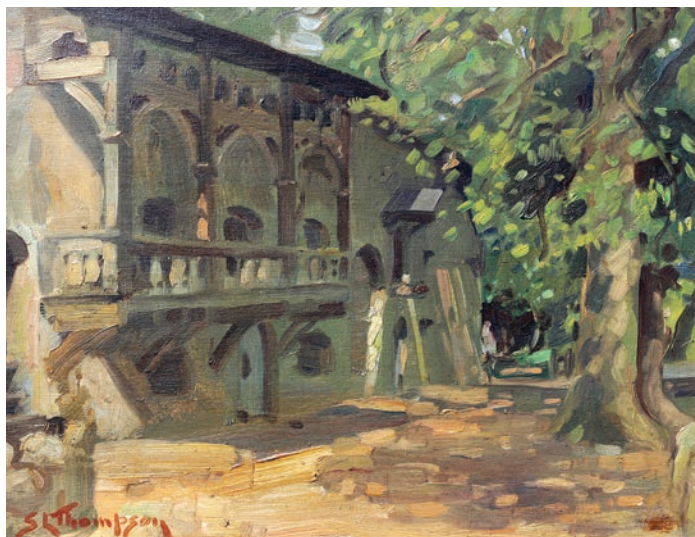


**59**

**W.G. Baker**

NZ 1864 - 1929, *Upper Pelorou River*  
Watercolour, Signed, 17 x 25cm, \$500 - 800





60

**Sydney Lough Thompson**NZ 1877 - 1973, *Old Building in Concarneau*

Oil on canvas, Signed, 28 x 36cm, \$3000 - 5000



61

**David Barker**NZ b. 1941, *River from a Side Road '84*

Pastel, Signed &amp; dated verso, 24 x 24cm, \$400 - 700

62

**H W****Kirkwood**

NZ 1854 - 1925

*Nancy Sound*

Oil on board

Initialed

29 x 22cm

\$800 - 1200



63

**J. Elder Moultray** NZ 1865 - 1922*Pair: Moonlight on the Rocks & Storm on the Taramakau*

Oil on board, Signed, ea 30 x 45cm, \$1500 - 2500

FINE ART SOCIETY  
NEW ZEALAND





64

**Petrus Van der Velden**Dutch/NZ 1837 - 1913, *Rhododendrons*

Oil on board, Signed, 20 x 25cm, \$600 - 900



65

**Gwyneth Richardson**NZ 1896 - 1980, *South Waikato Landscape*

Watercolour, Signed, 35 x 53cm, \$250 - 400



66

**Mabel Withers**NZ 1870 - 1936, *Ohinemutu, Rotorua*

Watercolour, Signed, 13 x 26cm, \$250 - 400



67

**Alexander Scott**British 1872 - 1925, *Pohutu Geyser, Whakarewarewa*

Oil on canvas, Signed, 120 x 80cm, \$12000 - 18000



68

**Charles Blomfield**NZ 1848 - 1926, *Head of Lake Wakatipu*

Oil on board, Unsigned, 18 x 32cm, \$800 - 1200



69

**Unknown**Dutch 19thC, *Knitting with the Pets*

Oil on canvas, Signed, 59 x 39cm, \$800 - 1200

71

**Geoff Williams**

NZ 20thC

*Still Life**with Cherries*

Graphite

Signed

23 x 25cm

\$600 - 900



72

**Mary McIntyre**

NZ b. 1933

*3 Rings, '95*

Graphite

Signed

10 x 10cm

\$100-200



70

**Geoff Williams**

NZ 20thC

*Repose II*

Graphite

Signed

31 x 50cm

\$2500 - 3500







73

**Terry Dwyer**

NZ 20thC

*Living Free of Understanding*

Etching, Signed, 10 x 10cm

\$200 - 400



74

**Josephine Davis**

NZ b.1959

*Model Kylie I*

Oil on board, Signed, 41 x 30cm, \$400 - 600



75

**Graham Crow**NZ 20thC, *Standing Nude*, Mixed media on board, Signed, 44 x 31cm, \$300 - 500

76

**Michael Blow**

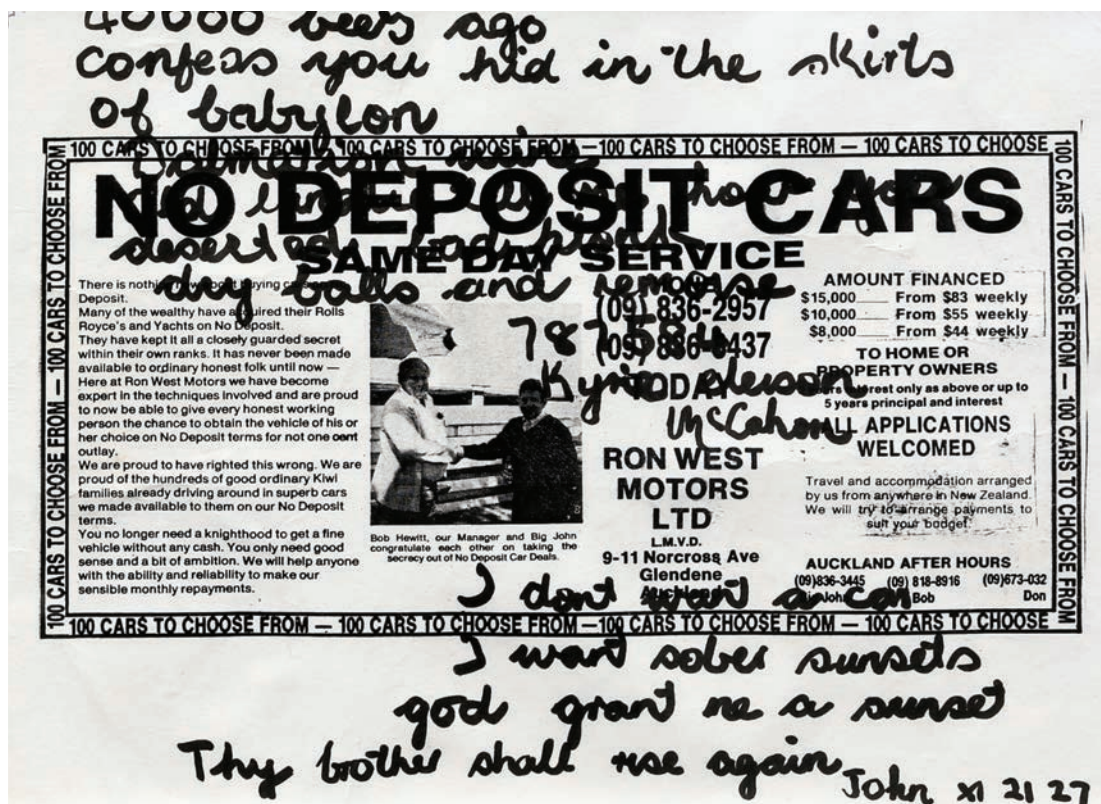
NZ 20th

*Balinese Drummer*

Pencil on paper

Signed, 20 x 17cm, \$300 - 500





77

Colin McCahon  
NZ 1919 - 1987  
40,000 Beers Ago  
Ink on poster  
Signed, 21 x 28cm  
\$8000 - 12000



78

Simon Payton  
NZ b. 1950  
What Big Teeth you Have  
Mixed media on board  
Signed  
46 x 46cm  
\$200 - 300



FINE ART SOCIETY  
NEW ZEALAND



79

**Max Gimblett**

NZ b. 1935

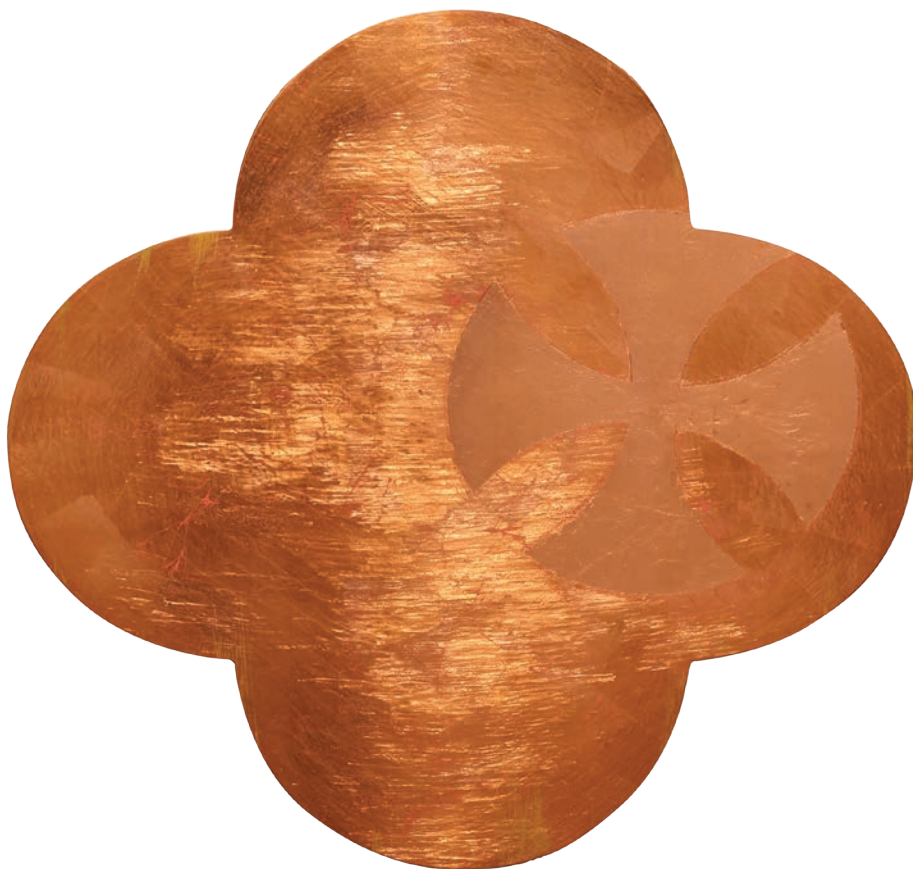
*Object of the Self*

Mixed media

Signed &amp; titled verso

25 inch Quatrefoil

\$15000 - 20000



80

**Philipa Blair**

NZ b. 1945

*Las Senderas (Pathways, Tracks)*

Acrylic on canvas

Signed verso, 102 x 152cm, \$3000 - 5000



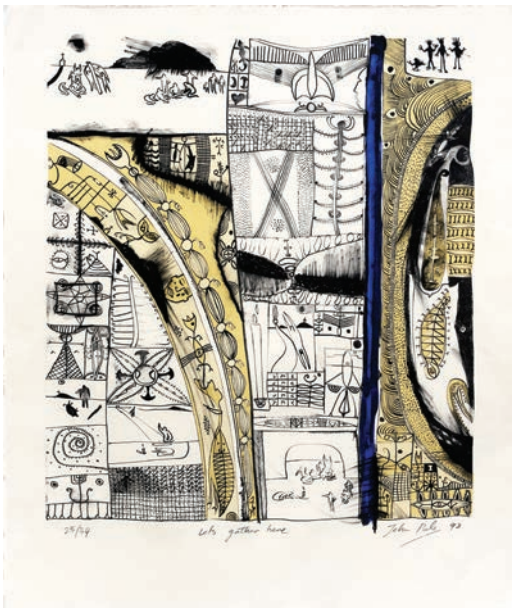




81

**Fatu Feu'u**

Samoan b. 1946, *Afio Mai Manukau '95*, 74/126  
Lithograph, Signed, 70 x 50cm, \$300 - 500



82

**John Pule**

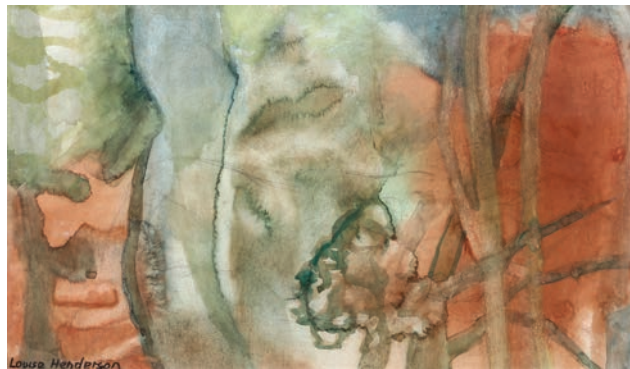
Tongan b. 1962, *Let's Gather Here*  
Hand coloured woodblock  
Signed, 72 x 60cm, \$1500 - 2500



83

**Nigel Brown**

NZ b. 1949, *Vision and Heart A/P*  
Hand coloured woodblock, Signed, 37 x 59cm, \$1000 - 1500



84

**Louise Henderson**

NZ 1902 - 1995, *Rock Country Abstract Landscape*  
Watercolour, Signed, 29 x 48cm, \$1800 - 2500



85

**Eion Stevens**

NZ b. 1952  
*Taniwha 01*  
Oil on canvasboard  
Signed  
31 x 40cm  
\$800 - 1200





**86**

**Simon Payton**

NZ b.1950

*Boatshed Intersection,*

*Sailor IV, 2002*

Oil on canvas

Signed verso

137 x 102cm

\$1800 - 2500



**87**

**Dave Roy**

NZ 20th C, *The Four Seasons - 4 panels*

Mixed media, Signed, 39 x 22cm each, \$700 - 1000





88

**James Moore**NZ 20th C, *Display Case I, 1990*

Paper collage, Signed, 43 x 56cm, \$600 - 900



90

**Carole Shepherd**

NZ b. 1945

*The Birth of the Nike '92, 3/8*

Lithograph

Signed, titled, dated

55 x 37cm

\$200 - 300



89

**John Badcock**NZ 20th C, *Evans Bay*

Oil on board, Signed, 25 x 34cm, \$500 - 800



91

**John Badcock**NZ 20th C, *Landscape*

Oil on board, Signed, 31 x 41cm, \$500 - 800





92

**Peter Jacka**NZ 20th C, *Ewelme Cottage Kitchen*, Watercolour, Signed, 48 x 68cm, \$1200 - 1800

93

**John Weeks**NZ 1888 - 1965, *Workmen Resting*  
Watercolour, Signed, 23 x 30cm, \$800 - 1200

94

**C.H. Fry**British 19th/20thC, *Westminster Bridge*  
Watercolour, Signed, 25 x 35cm, \$300 - 500





95

**Lincoln Lee**

NZ 1885 - 1968, *Coromandel Landscape*  
 Watercolour, Signed, 28 x 36cm, \$400 - 600



96

**Douglas Badcock**

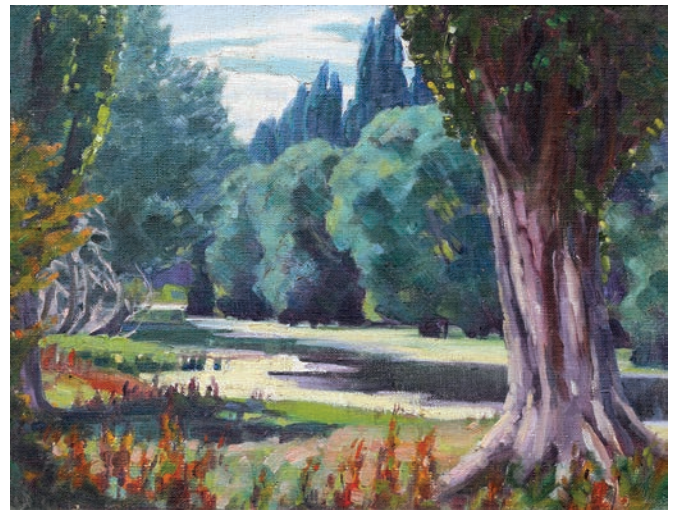
NZ b. 1942, *Kaikoura Coastline*  
 Oil on board, Signed, 30 x 40cm, \$500 - 800



97

**Graham James**

NZ 20thC, *Still Life with Objects*  
 Oil on canvas, Signed, 66 x 110cm, \$400 - 700



98

**Marcus King**

NZ 1891 - 1977  
*Ngaruroro River, Havelock North*  
 Oil on canvas  
 Signed  
 30 x 39cm  
 \$600 - 900



99

**Tom Peerless**

NZ 19thC, *Fiords, Southland*  
 Watercolour, Signed, 59 x 35cm, \$600 - 900





**100**  
**R V Dyke**  
 NZ 20thC  
*Pastoral Scene*  
 Oil on board  
 Signed  
 19 x 24cm  
 \$150-300



**102**  
**Carl Laugesen**  
 NZ 1900 - 1987  
*River Scene Near Hamner C1938*  
 Watercolour  
 Signed  
 24 x 36cm  
 \$200 - 300



**101**  
**Suzanne Herschell**  
 NZ 20thC, *Marlborough Sounds*  
 Acrylic on canvas, Signed, 50 x 60cm, \$300 - 400



**103**  
**J Healy**  
 British 19th/20thC, *English Rural Scene*,  
 1911, Oil on board, Signed, 38 x 24cm  
 \$500 - 800





**104**

**Edward Duval**

British fl. 1876 - 1916, *Seascape*, Watercolour, Signed, 51 x 79cm, \$400 - 700



**105**

**A A Prout**

British b. 1946, *Cottage by Stream*  
Watercolour, Signed, 19 x 27cm, \$200 - 300



**106**

**Gabrielle Hope**

NZ 1916 - 1962, *Floral Still Life with Poppies*  
Watercolour, Signed, 43 x 56cm, \$600 - 900



FINE ART SOCIETY  
NEW ZEALAND





**107**

**Unknown**

Dutch 19thC

*European Town Market*

Oil on board

Signed

29 x 20cm

\$800 - 1200



**108**

**Jesse Hollobon**

NZ 1860 - 1946

*Riverscape*

Oil on board

Signed

27 x 37cm

\$150 - 200

**109**

**W.H... indistinct**

British 19thC

*An Abbey in the Woods*

Oil on panel

Initialed

20 x 25cm

\$700 - 1000



**110****Evelyn Guity**

French 20thC

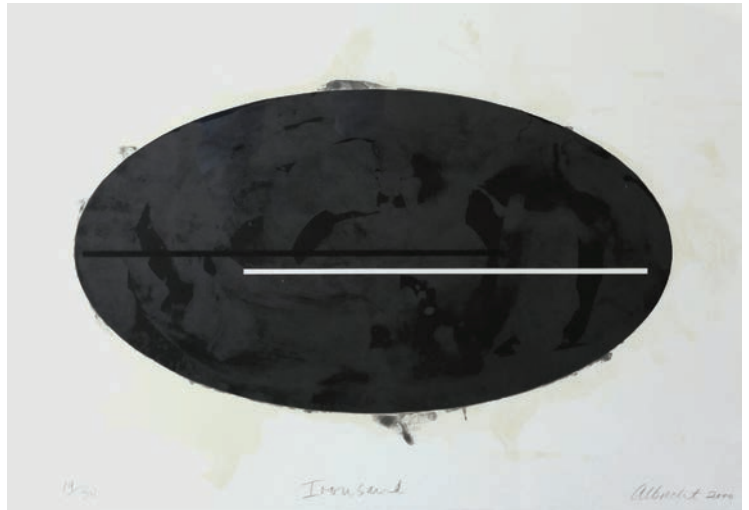
*Contemplez les formes rayonnantes d'amour*

Mixed media on board

Signed verso

55 x 46cm

\$300 - 500

**112****Gretchen Albrecht**

NZ b. 1943

*Ironsand 19/30*

Lithograph

Signed

60 x 80cm

\$1800 - 2200

**111****Charlotte Graham**

NZ 20thC

*E Tika Matou*

Mixed media

Signed

56 x 78cm

\$900 - 1400





**113**

**Anthony Warnes**

NZ 20thC, *Sailing Boats*

Acrylic on board, Signed, 20 x 30cm, \$250 - 400



**116**

**Anthony Warnes**

NZ 20thC

*Irises*

Acrylic on paper

Signed

45 x 35cm

\$250 - 400



**114**

**Debbie Thyne**

NZ 20thC, *Signification*, 1998 10/30

Etching, Signed, 17 x 31cm, \$100 - 200

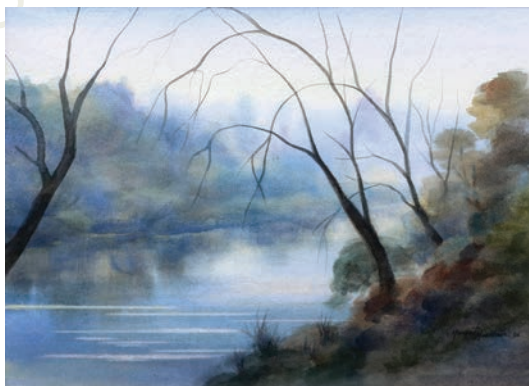


**115**

**D J Blair**

NZ 20thC, *Seascape with figures*

Watercolour, Signed, 20 x 49cm, \$150 - 300



**117**

**Margot Mountain**

NZ 20thC, *Waikato River*

Watercolour, Signed, 33 x 44cm, \$100 - 200



**118****Signed indistinctly**

British 19thC

*Pair; Rural River Scenes with Figures, 1874*

Oil on canvas, Signed

ea 30 x 45cm, \$700 - 1000

**120****Anthony Warnes**

NZ 20thC

*Woman Standing*

Oil on board, Signed

48 x 20cm, \$300 - 500

**119****Anthony Warnes**NZ 20thC, *Figures in a Queue*

Oil on board, Signed, 19 x 48cm, \$300 - 500

FINE ART SOCIETY  
NEW ZEALAND





FINE ART SOCIETY  
NEW ZEALAND LIMITED

# ABSENTEE BIDDING FORM

Scan and email to: [info@aesthete.co.nz](mailto:info@aesthete.co.nz)

Name:.....

Address:.....

.....

Phone:..... Mobile: .....

Email:.....

Bidding Number  
(Will be issued for our reference)

Signed:.....

Lot No.	Artist/Description	\$ Bid Price (excluding Premium)
.....	.....	.....
.....	.....	.....
.....	.....	.....
.....	.....	.....
.....	.....	.....
.....	.....	.....
.....	.....	.....
.....	.....	.....
.....	.....	.....
.....	.....	.....
.....	.....	.....



## FINE ART SOCIETY NEW ZEALAND

Ph 0800 377 483

PO Box 766, Cambridge 3450

[www.fineartsociety.net](http://www.fineartsociety.net)

# CONDITIONS OF SALE

The highest bidder shall be the buyer. In the event of any dispute as to the bidding in respect of any lot, that lot be offered again at the discretion of the auctioneer whose decision shall be absolute and final.

The auctioneer has the right:

1. To refuse any bid
2. To advance the bidding at his absolute discretion
3. To place a reserve on any lot
4. To place a bid or bids on behalf of the seller
5. To withdraw any lot from sale
6. To require a successful bidder to pay forthwith the whole or any parts of the purchase price

The auctioneer acts as the agent of the seller and the auctioneer nor the seller shall be responsible for any defects or faults in any lot or for any errors in the description of any lot and no compensation shall be paid in respect of same. From the time of the lot being sold, such lot will be the responsibility of the buyer.

## BUYERS' GUIDE

### BIDDER REGISTRATION

All intending bidders are required to register for a bidding number prior to the auction commencing.

### ABSENTEE BIDS

Absentee bidding can be arranged – please ask a member of staff for an Absentee Bidding Form. Telephone bidding may be arranged for those not able to attend the auction as long as this is arranged at 24 hours prior to the sale commencing. The Auctioneers will do their utmost to execute absentee bids for customers, however we will not be responsible if circumstances arise which result in failure to do so.

### COLLECTION OR DELIVERY OF PURCHASES

Successful bidders may collect their purchases after making payment at the conclusion of the auction. Purchasers are required to settle their accounts and arrange collection of their purchases within 24 hours after the sale. Collection will be available from Aesthete Gallery, cnr Victoria and Rostrevor Streets, Hamilton, 10am - 4pm Tuesday to Friday, 10am - 2pm Saturday.

### BUYERS' PREMIUM

A buyers' premium of 17% (plus GST) applies to all lots.

### ESTIMATES

Estimates are provided as a guide only. They are prepared well in advance of the sale and are subject to revision at any time.

### PAYMENT FACILITIES

EFTPOS is available for transactions up to the bank's daily limit. For transactions over that limit it is possible to pay by cheque where credit card details are provided as security and at the sole discretion of management. Internet payments may be made on the night of the auction with collection the following day. Credit cards are accepted on the understanding that a 2% surcharge applies. In some cases a delayed payment may be arranged, but such payments must be arranged with the Auctioneers prior to the sale. Title on all lots will not be transferred until full payment has been received.







# WAIKATO ART AUCTION

## NOVEMBER 2017



Lot 42

Viewing held at:



Ph: 07 839 0730  
cnr Victoria &  
Rostrevor Sts  
Hamilton  
[www.aesthete.co.nz](http://www.aesthete.co.nz)

Staged by:



FINE ART SOCIETY  
NEW ZEALAND

Ph 0800 377 483  
PO Box 766  
Cambridge 3450  
[www.fineartsociety.net](http://www.fineartsociety.net)

Auction held at:

RSA Rooms  
Rostrevor St

Steve Davis  
Licensed  
Auctioneer

