



FINE ART SOCIETY
NEW ZEALAND

WAIKATO ART AUCTION 2014

Monday 15th September 2014 at 6.30pm

Lot 61 detail



FINE ART SOCIETY
NEW ZEALAND

WAIKATO ART AUCTION

SEPTEMBER 2014

Monday 15th September 2014 at 6.30pm



Proudly supported by The Rotary Club of Waikato Sunrise
Waikato Art Auction 2014 will assist in raising funds for youth related programmes

a gallery member of



AESTHETE GALLERY



HAMILTON

WAIKATO'S LEADING FINE ART GALLERY

Historical & Contemporary Fine Art

Early New Zealand works; colonial landscapes; early Maori portraits and examples of the best art produced in the late 19th and the 20th centuries.

European works by 19th, 20th and 21st century artists.

Contemporary works by the country's leading artists, representing a wide range of subjects, styles and mediums.

Including a wide range of contemporary art prints.

Picture framing of the highest quality at reasonable prices as well as hand-made frames for special works.

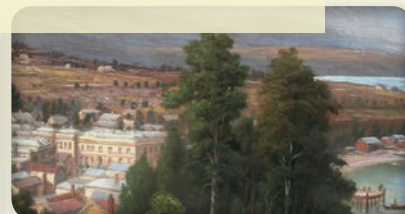
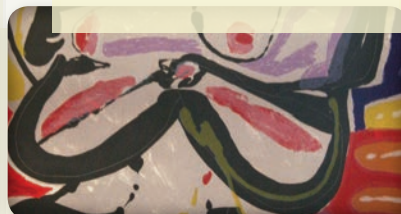
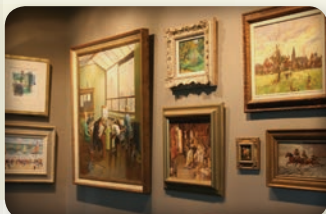
We can offer expert advice on condition and arrange restoration work.

Appraisals and valuations undertaken for all purposes.

Aesthete Gallery - at the heart of fine art

HAMILTON

Corner of Victoria and Rostrevor Streets





FINE ART SOCIETY
NEW ZEALAND

WAIKATO ART AUCTION SEPTEMBER 2014

Welcome to Waikato Art Auction 2014. We are pleased to be able to offer another great collection to our Waikato, National and International collectors. The continued success of our Waikato auctions means we have again attracted many good paintings from all over the country.

The economy seems to be finally moving in the right direction, both here and overseas. It is gratifying to see that the art market continues to show strength and stability, with new records still being set both here and internationally.

Overall the art market has shown resilience in the face of tough trading conditions, however collectors are becoming more discerning of both quality and price. It is not true to say that all art is an investment, but with good advice and astute buying collecting art can be both enjoyable and rewarding.

Much of the art offered for sale in this catalogue has come from various estates and private collections largely in the Waikato area. We believe the estimates to be very realistic and a number of lots are being sold without reserve. We are confident you will find something worthy of interest.

We look forward to welcoming you to the viewing and seeing you at the auction. If you have any queries please don't hesitate to contact myself or the staff at Aesthete Gallery Hamilton.

Grant Bezett
Director
Fine Art Society New Zealand

grant@fineartsociety.net
www.fineartsociety.net

VIEWING HELD AT

Aesthete Gallery Hamilton

cnr Victoria & Rostrevor Sts
Hamilton

**Saturday 6th September to
Sunday 14th September
Daily: 10am – 4pm**

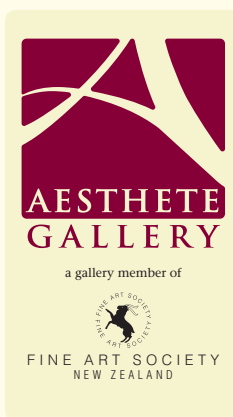
**Viewing on day of sale
Monday 15th: 9am – 1pm**

Ph: 07 839 0730

Fax: 07 839 0731

www.aesthete.co.nz

info@aesthete.co.nz



AUCTION HELD AT

**Monday 15th September 2014
commencing 6.30pm**

RSA Rooms

Rostrevor Street
Hamilton

Ph: 0800 377 483

Steve Davis

Licensed Auctioneer





1
Aston Greathead
NZ b.1921
Cattlestop on the Road to Mt Cook
Oil on board
Signed
27 x 40cm
\$200 - 500



2
Bev Dawson
NZ 20thC
King Edward Ave Devonport
Watercolour
Signed
40 x 58cm
\$100 - 300



3
John Haley
NZ 20thC
Country Lane at Dusk
Watercolour
Signed
18 x 26cm
\$200 - 300



4
Violet Watson
1906 - 1992, *Black Eyed Susan's*
Oil on board, Signed, 50 x 61cm, \$500 - 800



5
Kenneth Nelson
NZ 20thC, *Old Cottage, Fruitlands*, Oil on board
Signed, 50 x 65cm, \$200 - 500



6
Myra Thompson
NZ 20thC, *Mt Maud from Cardrona Valley Road*
Oil on board, Signed, 30 x 40cm, \$150 - 300



7
Margot Mountain
NZ 20thC, *Blossom Flower Study*, Watercolour
Signed, 23 x 32cm, \$100 - 200



8
Peggy Spicer
1908 - 1974
White Villa, Hamilton
Watercolour
Signed
25 x 27cm
\$400 - 600



9

Enga Washbourn

NZ 20thC

*Winter Morning from**Queens Drive, Nelson*

Watercolour

Signed & dated 1936

36 x 55cm

\$200 - 300



13

F. GianniNZ 19thC, *River Landscape*

Oil on board, Signed, 29 x 44cm, \$200 - 300



10

Jeanette Blackburn

NZ 20thC

Cattle near Bush

Oil on board

Signed

30 x 40cm

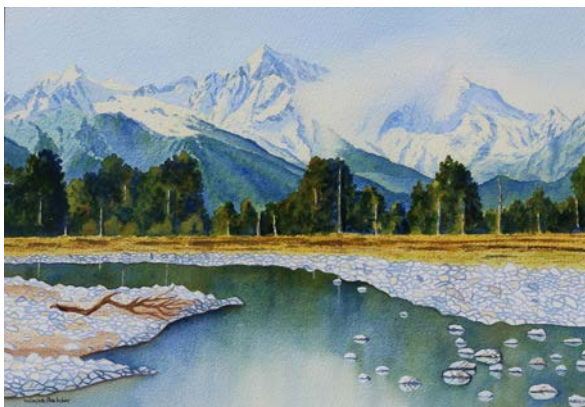
\$800 - 1200



14

E.S. England? (indistinct)British 19thC, *Sheep Grazing*

Oil on canvas, Signed, 34 x 44cm, \$300 - 500



11

Wayne Belcher

NZ 20thC

*Major Peaks**Southern Alps,**Westland*

Watercolour

Signed

27 x 40cm

\$150 - 250



15

Violet Watson1906 -1992, *Waikato Landscape*, Sepia

wash, Signed, 22 x 30cm, \$100 - 200



12

Wayne SinclairNZ 20thC, *Houses, Tuscany*

Oil on board, Signed, 23 x 64cm, \$300 - 500

16

Violet Watson1906 -1992, *Bush Stream, Waikato*

Sepia wash, Signed, 30 x 22cm

\$100 - 200





17
Blythe Fletcher
 1890 - 1949
Cairo Street Market
 Gouache
 Signed
 34 x 25cm
 \$900 - 1400



20
Kay Walsh
 NZ 20thC, *Old Coromandel*, Watercolour
 Signed, 24 x 35cm, \$200 - 400



18
Annette Clery
(indistinct)
 French 19thC
Portrait of a Woman
 Sepia wash
 Signed
 23 x 16cm
 \$200 - 400



21
Violet Watson
 1906 - 1992, *Farm near Paeroa*, Oil on board
 Signed, 38 x 44cm, \$700 - 1000



19
Annette Clery
(indistinct)
 French 19thC
Woman Seated
 Sepia wash
 Signed
 25 x 17cm
 \$200 - 400



22
Violet Watson
 1906 - 1992, *In the Kauaeranga Valley, Coromandel*
 Oil on board, Signed, 70 x 90cm, \$1200 - 1800



23
Unknown
British 20thC
Circus Performers
Etching
Unsigned
18 x 25cm
\$200 - 400



27
Ida Carey
1891 - 1982, *Mother in the Sitting Room*
Oil on board, Certificate verso, 37 x 45cm, \$500 - 800



24
Roger Morris
NZ b.1935
Spanish Caravel (sold with a Signed book)
Watercolour
Signed
15 x 21cm
\$300 - 400

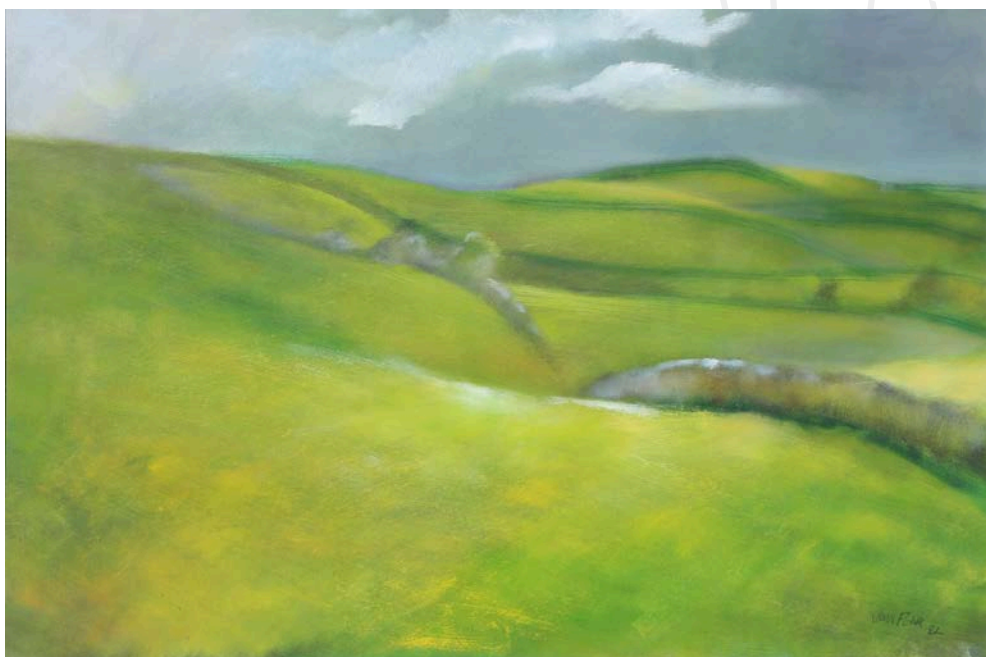


25
George Genet
NZ 20thC
Deep Creek, Mesopotamia
Oil on board
Signed
40 x 76cm
\$200 - 400



28
Margot Philips
1907 - 1988, *Strange Creatures*
Monoprint, Signed, 30 x 26cm, \$200 - 400

26
Joan Fear
NZ 20thC
Towards Ohaupo
Oil on board
Signed
60 x 90cm
\$2000 - 3000





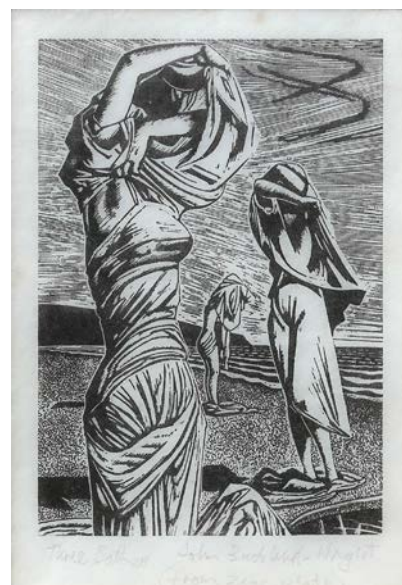
29
Sir Peter Siddell
 1935 - 2011
Harbour
 Screenprint 13/80
 Signed & dated '85
 37 x 31cm
 \$1200 - 1600



32
E. Mervyn Taylor
 1906 - 1964, *Huia*
 (sold together with Taylor's 1957 book)
 Wood engraving, Signed, 12 x 16cm, \$1500 - 1800



30
James Turkington
 1895 - 1979
Onehunga
 Oil on board
 Signed & dated 1930
 31 x 38cm
 \$600 - 900



33
John Buckland Wright
 1897 - 1954
Three Bathers
 Zinc etching
 Signed
 18 x 12cm
 \$700 - 1000



31
Sir William Dargie
 1912 - 2003
Lake Hayes
 (Circa 1960)
 Oil on canvas
 Signed
 82 x 115cm
 \$5000 - 8000

34
Ernest Buckmaster
 1897 - 1968
Rangatikei River
 Oil on canvas
 Signed
 80 x 101cm
 \$4000 - 7000



35
Ivy Perry
 NZ 20thC
Pakuranga Fields
 Watercolour
 Signed
 34 x 48cm
 \$300 - 400

37
Philip Markham
 NZ 20thC
Wellington Harbour, Pt Haswell
 Acrylic on board
 Signed
 87 x 57cm
 \$800 - 1200



36
Michael Smither
 NZ b. 1939
Portrait of Elizabeth
 Pencil
 Initialed and dated '66
 56 x 45cm
 \$1500 - 3000

38
Maud Burge
 1865 - 1957
Portrait of a Woman
 Watercolour
 Signed
 47 x 40cm
 \$600 - 900





39

Walter Wright1866 - 1933, *Maori Village, Lake Taupo in Winter*

Watercolour, Signed, 26 x 39cm, \$3500 - 5000



40

John Gully1819 - 1888, *Early Morning in the Southern Alps*

Watercolour, Signed, 28 x 43cm, \$5000 - 8000



41

Laurence W Wilson

1852 - 1912

Mt Pembroke, Lake Wakatipu

Oil on board

Signed, titled & dated 1905

50 x 74cm, \$5000 - 8000



42

George Barker1856 - 1922, *The Coast near Lands End*

Watercolour, Signed, 74 x 49cm, \$800 - 1200



43

Frank Wright1860 - 1923, *Evening Heat, Northland*

Watercolour, Signed, 18 x 26cm, \$500 - 800



44

J C Hoyte1835 - 1913, *Head of Lake Wakatipu*

Watercolour, Signed, 35 x 63cm, \$7000 - 10000



45

Thomas Selby Cousins

1840 - 1897

Haymaking at Glenorchy

Watercolour

Signed and dated 1891

25 x 43cm

\$800 - 1200



47

Frank Wright1860 - 1923, *Waikato River near Mercer*

Watercolour, Signed, 20 x 32cm, \$600 - 900



48

H W Kirkwood

1854 - 1925

Waimea, West Nelson

Oil on board

Initialed

15 x 31cm

\$800 - 1200

46

Laurence W Wilson

1852 - 1912

Andersons Bay

Watercolour

Signed, titled & dated

1897

21 x 52cm

\$4000 - 7000





49
Laurence W Wilson
 1852 - 1912
Waitaki Stream
 Oil on board
 Signed and titled
 25 x 40cm
 \$1200 - 1800



50
Kennett Watkins
 1847 - 1933, *Sunset Great Barrier Island*, Watercolour
 Signed, titled & dated 1892, 12 x 28cm, \$800 - 1200



51
Laurence W Wilson
 1852 - 1912
Deer Startled, Lake Hawera
 Watercolour
 Signed, titled & dated 1898
 24 x 36cm
 \$4000 - 7000



52
Alfred Sharpe
 1830 - 1912
Cox's Bridge Road
 Watercolour
 Signed
 45 x 64cm
 \$30000 - 40000



53
Frances Hodgkins
 1869 - 1947, *Washerwomen*
 Watercolour, Initialed, 34 x 26cm, \$12000 - 18000



54
Unknown
 NZ 19thC
Maori Village, Lake Taupo
 Oil on board, unsigned
 20 x 20cm, \$400 - 600



55

Olivia Spencer Bower

1905 - 1982, *Snow, Menzies Bay*
 Watercolour, Signed, 28 x 25cm
 \$800 - 1200



56

Olivia Spencer Bower

1905 - 1982, *Central Otago Landscape*
 Watercolour, Signed, 24 x 27cm
 \$800 - 1200



57

Cedric Savage

1901 - 1969, *Tropical Still life*
 Oil on board, Signed
 43 x 53cm, \$2,500 - 4000



58

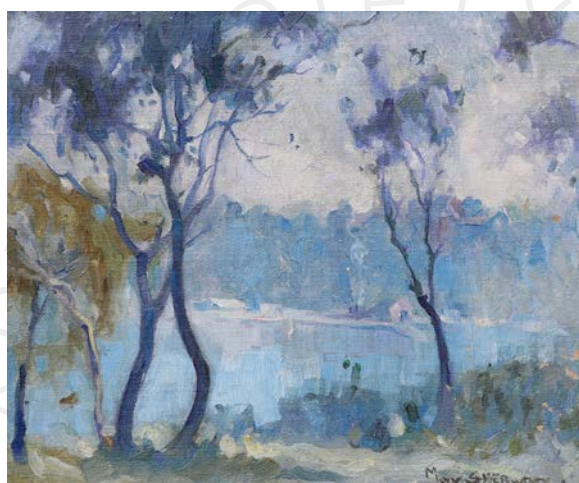
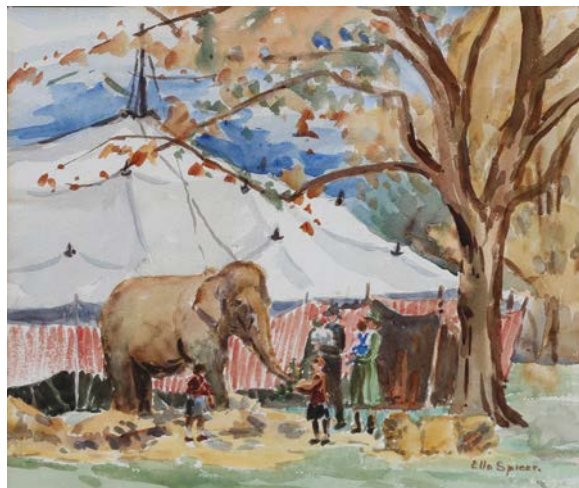
John Weeks

1888 - 1965, *Orange Facade, Corsica*
 Gouache, Signed, 45 x 57cm, \$6000 - 9000

59

Ella Spicer

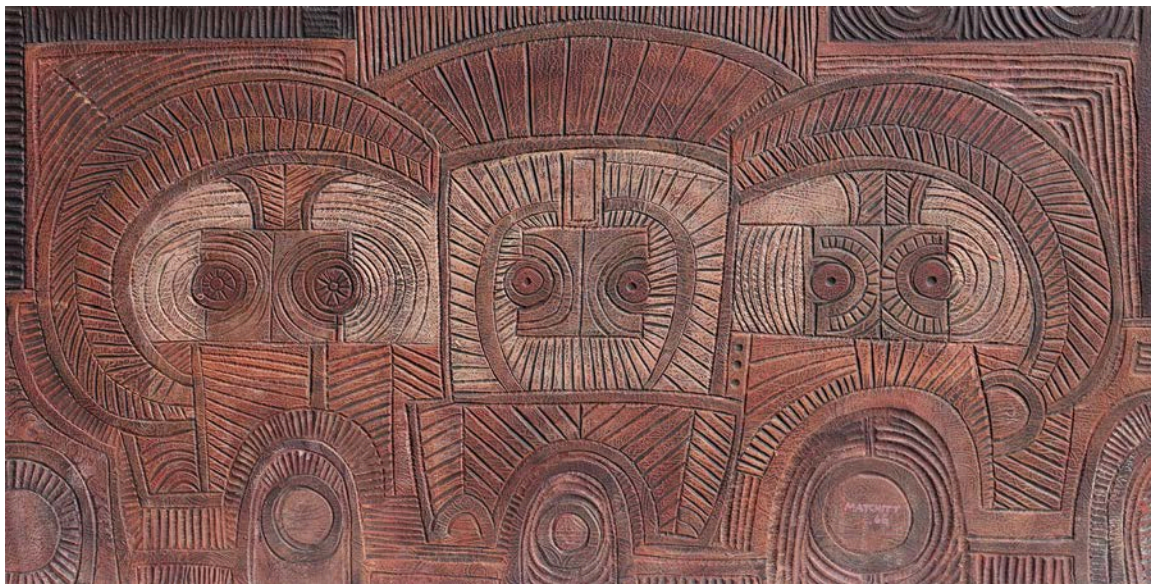
1876 - 1956
Elephant outside the Big Top
 Watercolour
 Signed
 27 x 32cm
 \$800 - 1200



60

Maud Sherwood

1880 - 1956, *Australian River Scene*
 Oil on board, Signed, 25 x 30cm
 \$3000 - 5000



61

Paratene MatchittNZ b. 1933, *Trout Row II Number 12*

Oil & PVA on board, Signed, 61 x 122cm, \$12000 - 18000



62

Gordon Walters

1919 - 1995

Tawa, 1968

Screenprint

Barry Lett multiple

53 x 42cm

\$1800 - 3000

64

Nigel Brown

NZ b. 1949

Sure to Rise

Handcoloured

Woodcut 9/10

Signed

74 x 59cm

\$2500 - 4000



63

Shane CottonNZ b. 1964, *Hopa 1:7*, Oil on canvas

Signed and dated 1999, 38 x 76cm, \$18000 - 24000



65

Ralph Hotere1931 - 2013, *Dawn/Water Poem*

Litho 22/50, Signed and titled

37 x 43cm, \$900 - 1400



66
Nigel Brown
 NZ b. 1949
Kiwi Lifestyle
 Handcoloured
 Woodcut 2/20
 Signed
 83 x 60cm
 \$2500 - 4000



70
Jeffery Harris
 NZ b. 1949
Family at Okains Bay, Akaroa
 Oil on board, Signed, 20 x 30cm, \$4500 - 7000



67
Garth Tapper
 1927 - 1999
Still Life with Vase
 Oil and acrylic
 on canvas
 Signed
 21 X 26cm
 \$1000 - 1400



68
Michael Illingworth
 1932 - 1998
Tawera Landscape, 1968
 Screenprint
 Barry Lett multiple
 47 x 54cm
 \$800 - 1200



71
Michael Smither
 NZ b. 1939, *Wave Invading a Rock Pool*
 Screenprint, Barry Lett multiple
 56 x 46cm, \$800 - 1200



69
Allen Maddox
 1948 - 2000
Untitled abstract
 Watercolour
 Signed, 40 x 58cm
 \$1600 - 2000



72
Michael Smither
 NZ b. 1939
Totem 2
 Screenprint
 Initialed & dated '72
 87 x 57cm, \$600 - 900

**73****Pat Hanly**

1932 - 2004

Everyman Awakes

Screenprint 18/20

Signed and dated '73

53 x 54cm

\$4000 - 6000

**76****Fatu Feu'u**

NZ 20thC

Otautahi Fono

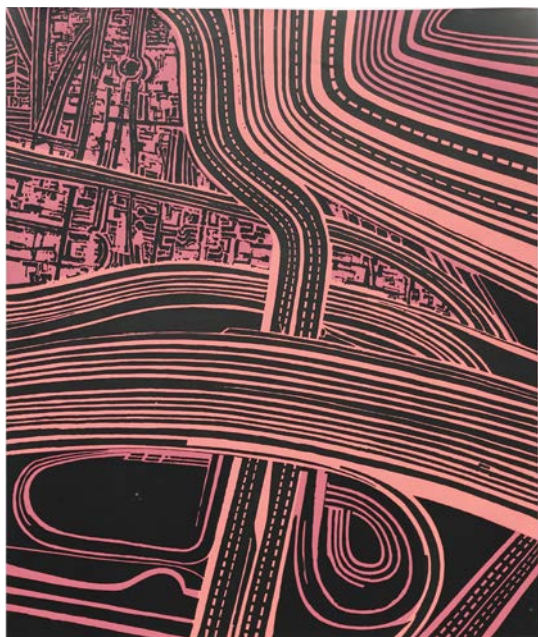
Mixed media

on canvas

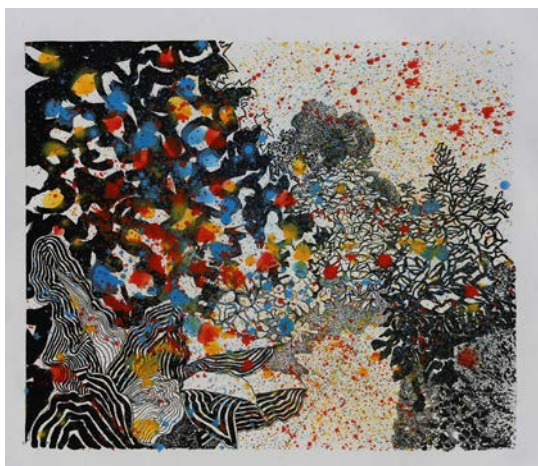
Signed

102 x 102cm

\$5000 - 7000

**74****Robert Ellis**NZ b. 1929, *Motorway Series*, Screenprint

Barry Lett multiple, 56 x 45cm, \$400 - 600

**75****Pat Hanly**

1932 - 2004

Inside the Garden, Screenprint, Barry Lett multiple

43 x 51cm, \$900 - 1400

77**Stanley Palmer**

NZ 20thC

Tannery, Fez

Bamboo etching 3/60

Signed and dated 1975

39 x 48cm

\$400 - 600

**78****Toss Woollaston**

1910 - 1998

Patrick Lucas, 1968

Screenprint

Barry Lett multiple

46 x 56cm

\$200 - 400

**79****Arthur Dagley**

1919 - 1998

*Snowbound**Quarry Road*

Acrylic on board

29 x 31cm, Signed

\$500 - 800



**80****Geoff Williams**

NZ 20thC, *Reclining Nude*
Graphite, Signed, 20 x 61cm
\$2500 - 4000

**81****Beatrix Dobie**

1887 - 1945
The Artist's Cat
Oil on board
Signed
32 x 26cm
\$500 - 800

84**Artist Unknown**

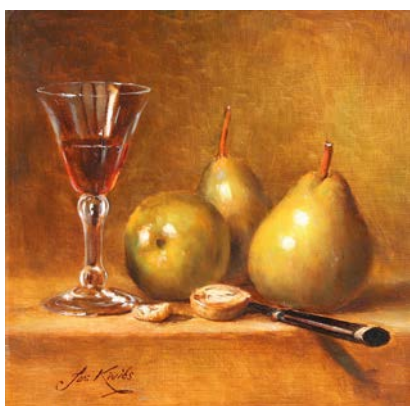
*Copy of
CF Goldie
Memories,
Ena Te Papatahi*
Oil on board
unsigned
125 x 100cm
\$2000 - 4000

**82****C F Goldie**

1870 - 1947
A Warm Day
Lithograph
CAS collection
1904
38 x 32cm
\$600 - 900

85**Edward**

British 19thC
*In the Lake
District*
Watercolour
Signed
16 x 32cm
\$200 - 300

**83****Jos Kivits**

NZ 20thC
*Pears and 18thC
Glass*
Oil on board
Signed
24 x 24cm
\$700 - 1000

**86****Wayne Sinclair**

NZ 20thC, *Urewera Stillness*
Oil on board, Signed, 35 x 63cm, \$200 - 300



87
H. Pauleine
 NZ 20thC
View of Rangitoto
 Watercolour
 Signed
 19 x 28cm
 \$100 - 200

90
Mary Watkin
 NZ 20thC
Bush Track
 Oil on board
 Signed
 26 x 18cm
 \$100 - 300



88
Robert Chilvers
 NZ 20thC
Winter Moves In
 Oil
 Signed
 40 x 65cm
 \$250 - 400

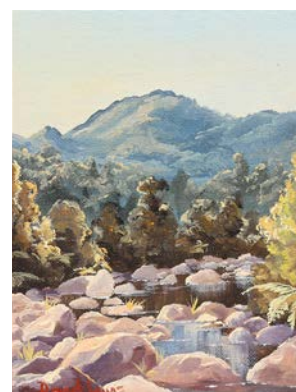


91
Roy Sefton
 NZ 20thC, *Pohangina Bush*
 Oil on board, 24 x 34cm, \$150 - 300



89
John Papas
 NZ b.1924
Venice
 Watercolour
 Signed
 22 x 26cm
 \$200 - 300

92
David Lewis
 NZ 20thC
Mountain Stream
 Watercolour
 Oil on Board
 30 x 22cm
 \$100 - 200



CHARLES F. GOLDIE

1870 -1947

‘Memories, 1903’ (Harata Rewiri Tarapata)

A strictly limited edition print produced
 to the highest standard with pigmented inks on museum quality paper

Ultrachrome pigmented ink archival print
 308gsm Hahnemuhle rag-matt paper
 Image 500 x 415mm
 Paper size 620 x 515mm.

Each print is numbered on the image and
 comes with a numbered certificate of
 authenticity together with a replica copy
 of the original 1904 catalogue

HERITAGE EDITIONS

a division of FINE ART SOCIETY NEW ZEALAND
 PO Box 9285 Newmarket, Auckland 1149
www.fineartsociety.net



HAND IN AT AESTHETE GALLERY, HAMILTON, OR FAX TO: 07 839 0731

Fax: Email:

I agree to comply with the Conditions of Sale as printed in this catalogue.

Signed:.....

AUCTION HELD AT



FINE ART SOCIETY
NEW ZEALAND

CONDITIONS OF SALE

The highest bidder shall be the buyer. In the event of any dispute as to the bidding in respect of any lot, that lot be offered again at the discretion of the auctioneer whose decision shall be absolute and final.

The auctioneer has the right:

1. To refuse any bid
2. To advance the bidding at his absolute discretion
3. To place a reserve on any lot
4. To place a bid or bids on behalf of the seller
5. To withdraw any lot from sale
6. To require a successful bidder to pay forthwith the whole or any parts of the purchase price

The auctioneer acts as the agent of the seller and the auctioneer nor the seller shall be responsible for any defects or faults in any lot or for any errors in the description of any lot and no compensation shall be paid in respect of same.

From the time of the lot being sold, such lot will be the responsibility of the buyer.

BUYERS' GUIDE

BIDDER REGISTRATION

All intending bidders are required to register for a bidding number prior to the auction commencing.

ABSENTEE BIDS

Absentee bidding can be arranged – please ask a member of staff for an *Absentee Bidding Form* or see overleaf. The Auctioneers will do its utmost to execute absentee bids for customers, however it will not be responsible if circumstances arise which result in failure to do so.

COLLECTION OR DELIVERY OF PURCHASES

Successful bidders may collect their purchases after making payment at the conclusion of the auction. Purchasers are required to settle their accounts and collect their purchases within 24 hours after the sale. Packing and freight can be arranged at the buyer's expense.

BUYERS' PREMIUM

A buyers' premium of 15% (plus GST) applies to all lots.

ESTIMATES

Estimates are provided as a guide only. They are prepared well in advance of the sale and are subject to revision at any time.

PAYMENT FACILITIES

EFTPOS is available for transactions up to \$2,000 which is the bank's daily limit. For transactions over that amount it is possible to pay by cheque where credit card details are provided as security and at the sole discretion of management. Visa and Mastercard are accepted on the understanding that a 2% surcharge applies.

VIEWING HELD AT

Aesthete Gallery Hamilton

cnr Victoria &
Rostrevor Sts
Hamilton
Ph: 07 839 0730
Fax: 07 839 0731
www.aesthete.co.nz
info@aesthete.co.nz



FINE ART SOCIETY
NEW ZEALAND

STAGED BY



FINE ART SOCIETY
NEW ZEALAND

Ph 0800 377 483
PO Box 9285
Newmarket
Auckland 1149
www.fineartsociety.net

AUCTION HELD AT

RSA Rooms

Rostrevor Street
Hamilton
Ph: 0800 377 483

Steve Davis
Licensed
Auctioneer



THE CAR YOU NEVER KNEW YOU ALWAYS WANTED.

You know that car you always wanted as a kid? That car you dreamed of one day owning? This is better. The all-new Jaguar F-TYPE Coupé. 550 hp, 0-100 kph in 4.2 seconds and dynamic, responsive handling. It's time to rethink your current dream car. F-TYPE Coupé from \$125,000.† #goodtobebad



HOW ALIVE ARE YOU?



DUNCAN & EBBETT

115 Hewletts Road, Mount Maunganui
Telephone: 07 928 1280

94 Tristram Street, Hamilton
Telephone: 07 838 1211 www.duncanandebbett.co.nz